

INSTALLATION INSTRUCTIONS C-FLW-3555-STR

Drop in flashlight charger for the 3.3" section of the Havis wide consoles

Designed for the Streamlight Stinger series

Charger and flashlight not included

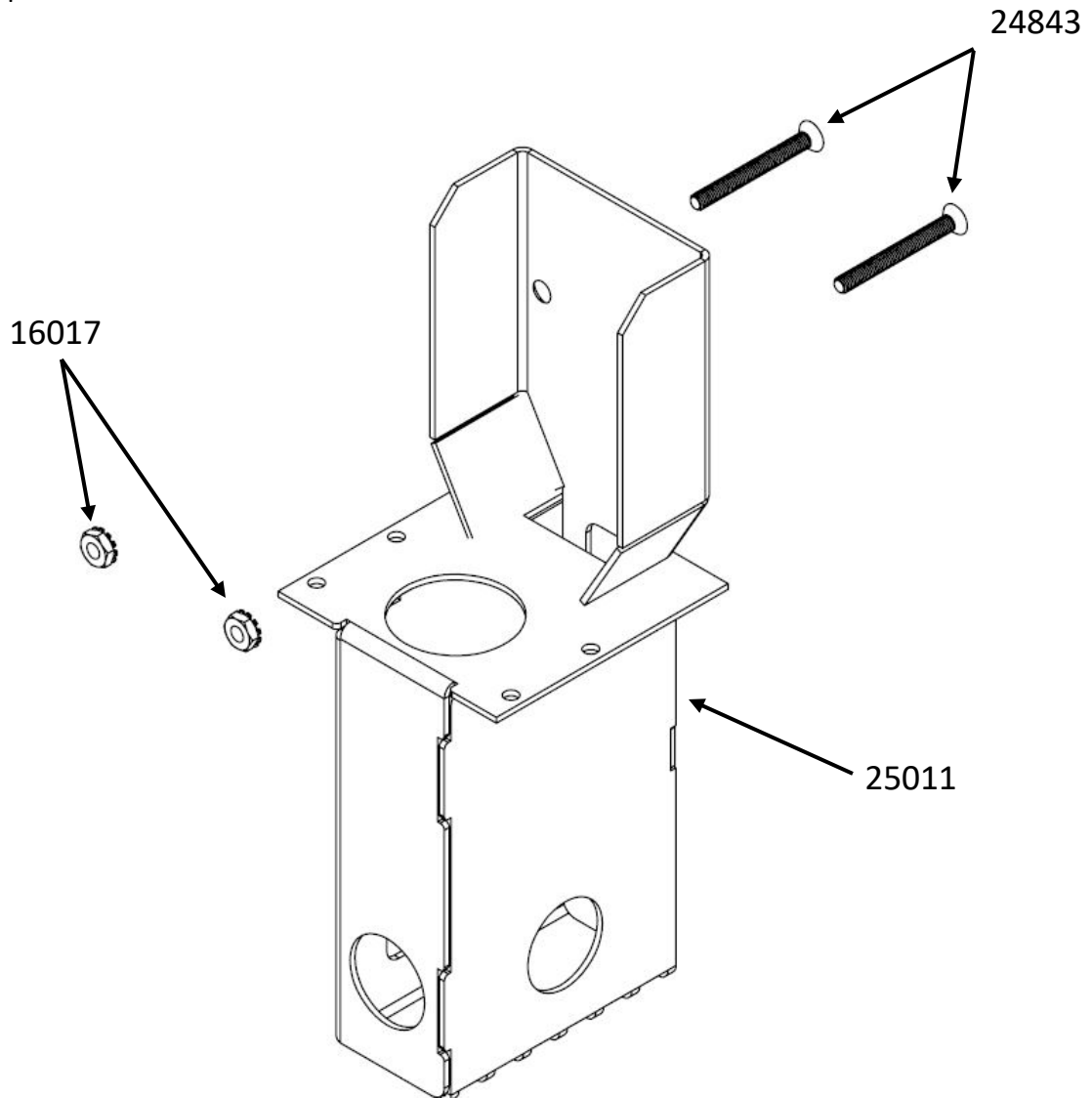
TOOLS REQUIRED:

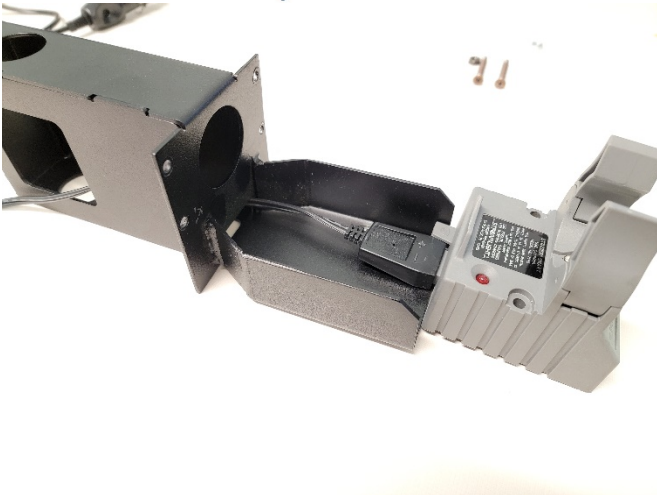
T-20 Torx driver

Phillips head screwdriver

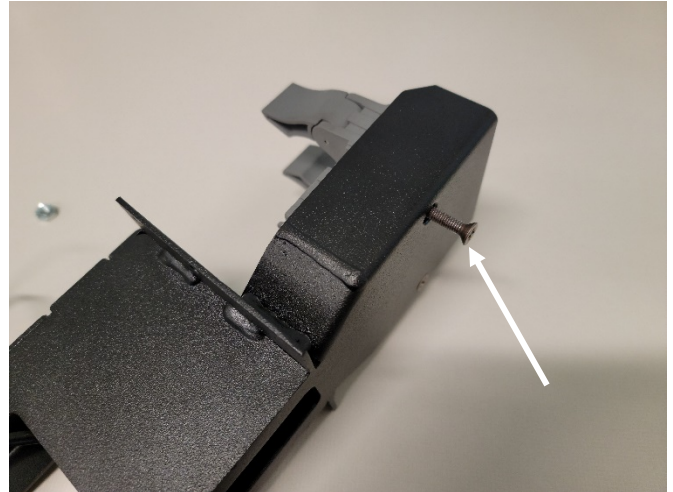
PARTS and MOUNTING HARDWARE:

<u>QTY</u>	<u>DESCRIPTION</u>	<u>PART#</u>
2	10-32 x 1.75" Machine screw	24843
1	Main assembly	25011
1	Hardware kit with Torx screws	11114
2	#10 Keps nuts	16017

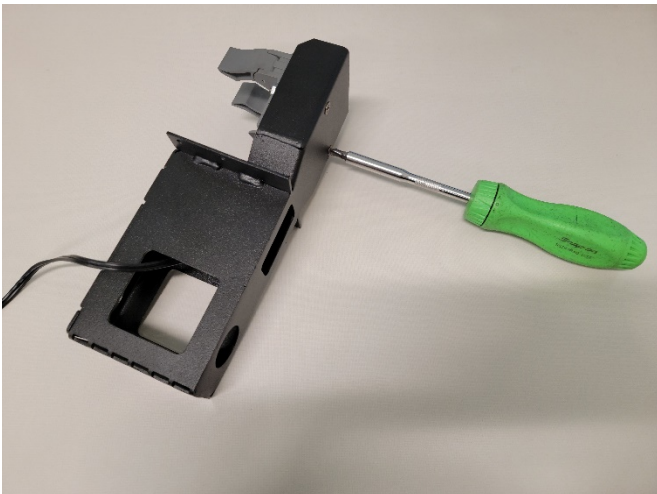




Slide Streamlight charger and power cable into base.



Insert 10-32 x 1.75" screws through back of base and charger.



Attach #10 keps nuts and tighten hardware.



Remove 3.5" section of console



Install bracket into console and install with previously removed hardware.



Installation is now complete.