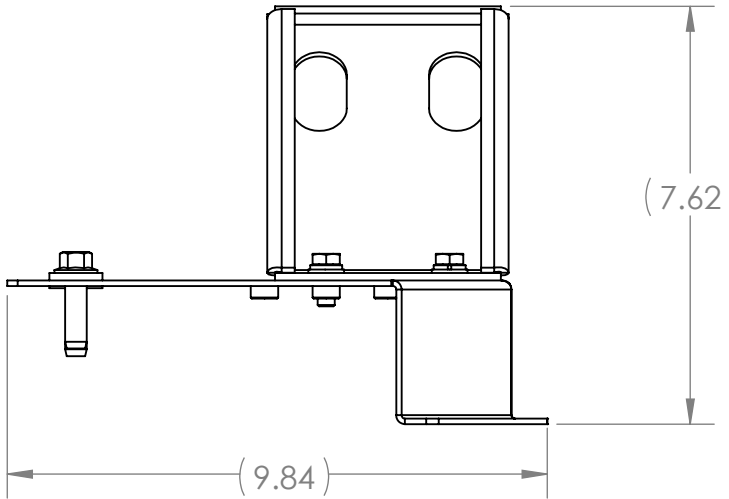
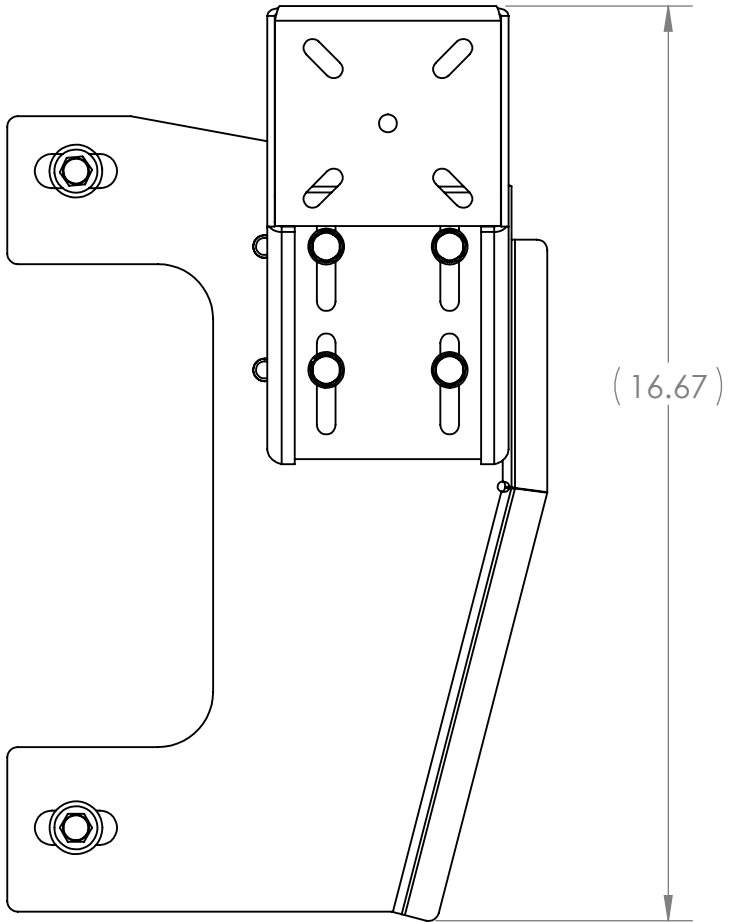
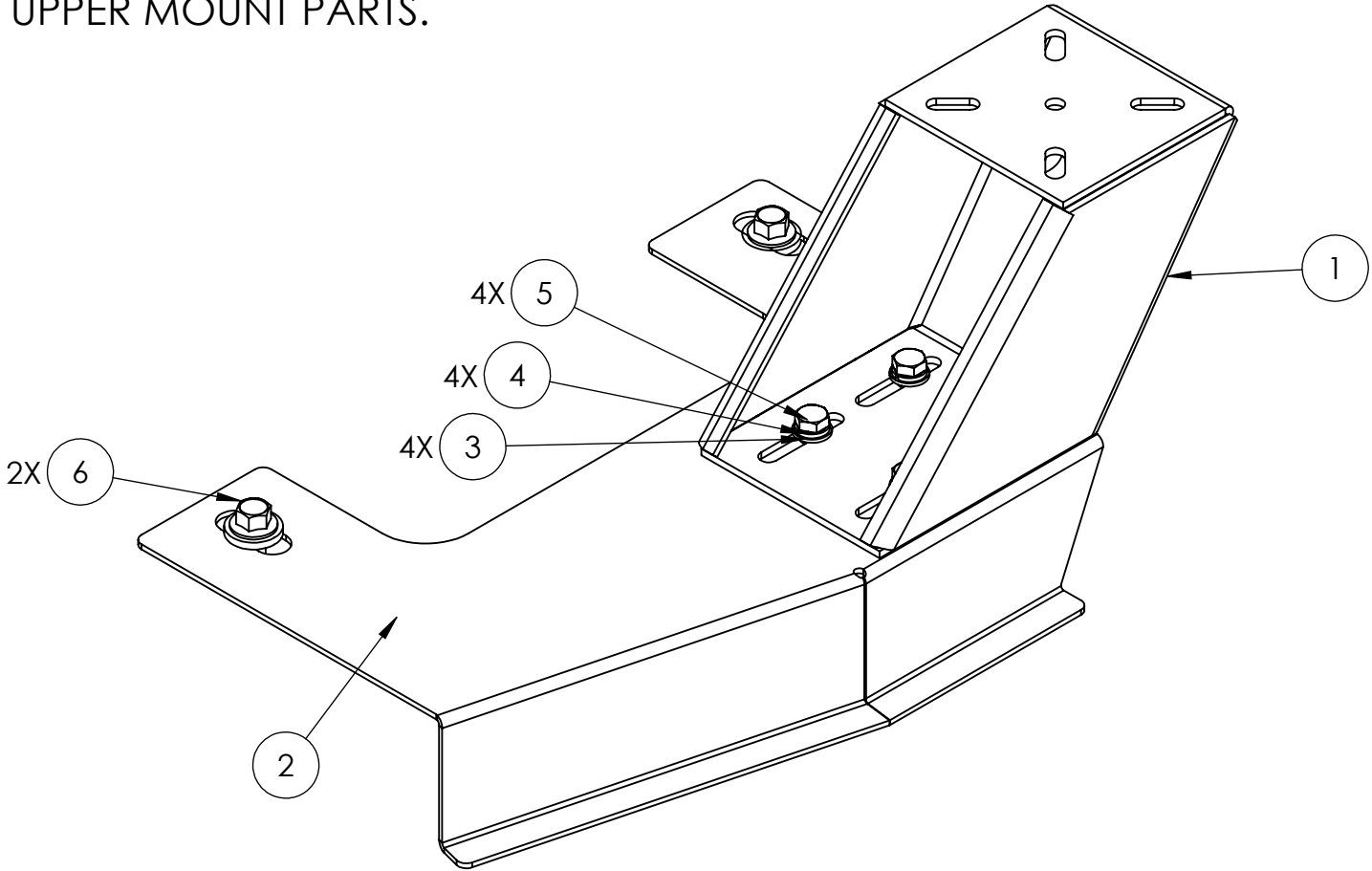



INSTALLATION INSRUCTIONS

1. REMOVE AND DISCARD PASSENGER SIDE FRONT SEAT BOLTS.
2. ALIGN HOLES IN BASE WITH SEAT MOUNTING HOLES AND SEAT BRACKETS.
3. INSTALL SEAT BOLTS PROVIDED AND TIGHTEN TO VEHICLE MANUFACTURERS'S TORQUE SPECIFICATION.
4. ATTACH LOWER OFFSET TO BASEPLATE WITH 5/16" BOLTS, LOCK WASHERS AND FLAT WASHERS (ANGLE TOWARDS CENTER OF VEHICLE.)
5. FOLLOW GENERAL INSTRUCTIONS FOR POLE AND UPPER MOUNT PARTS.



ITEM NO.	QTY.	PART NUMBER	DESCRIPTION
1	1	CM002531	BRACKET, MOUNT, 55 DEG. 5" LOWER OFFSET BASE W/ SLOTS
2	1	CM009672	BRACKET, HDM BASE, FORD INUT, 2020+
3	4	GSM31006	WASHER, 5/16" FLAT, SAE ZP
4	4	GSM31027	WASHER, 5/16" LOCK, ZP
5	4	GSM33011	SCREW, 5/16-18 X 3/4"
6	2	GSM70051	FORD SEAT BOLT 2020 INUT

PROPRIETARY AND CONFIDENTIAL: THE INFORMATION CONTAINED IN THIS DRAWING IS THE SOLE PROPERTY OF HAVIS, INC. ANY REPRODUCTION IN PART OR AS A WHOLE WITHOUT THE WRITTEN PERMISSION OF HAVIS, INC. IS PROHIBITED.	
UNLESS OTHERWISE SPECIFIED:	
THE USE OF ANY EQUIVALENT COMPONENTS, MATERIALS, OR FINISHES MUST BE PRE-APPROVED BY HAVIS ENGINEERING	THIRD ANGLE PROJECTION
ALL COMPONENTS AND ASSEMBLIES MUST BE RoHS COMPLIANT AND CONFORM TO FLAMMABILITY REQUIREMENTS OF FMVSS 302 OR UL94HB	CAD IS MASTER THIS DRAWING CONFORMS TO ASME Y14.5M - 1994 OR LATER: ALL DIMENSIONS SHOWN ARE IN: INCHES AND ARE MEASURED AFTER PART FINISH
STANDARD SPECS REQUIRED: 98-000004	KEY > CRITICAL DIMENSION
ALL INSIDE BEND RADII TO BE MAX 1.5X MAT. THK.	.X" ±0.050 X° ±1°
ALL THREADS ARE IN UNC-2A/2B OR UNF-2A/2B AFTER COATING	.XX" ±0.030
125/ MAX SURFACE FINISH ON MACHINED OR MOLDED PARTS	.XXX" ±0.010

MATERIAL: SEE BOM		<div><div>Corporate Headquarters HAVIS, INC. 75 Jacksonville Road Warminster, PA 18974 1-800-524-9900</div></div>		
FINISH: NONE				
WEIGHT: 7.52		DESCRIPTION: INSTALL INSTRUCTIONS, HDM, FORD INUT, 2020+		
		DRAWING: C-HDM-1006-INST	VERSION: 11/19	
AREA: (502.13)		SCALE: 1:8	DO NOT SCALE DRAWING	SHEET 1 OF 1