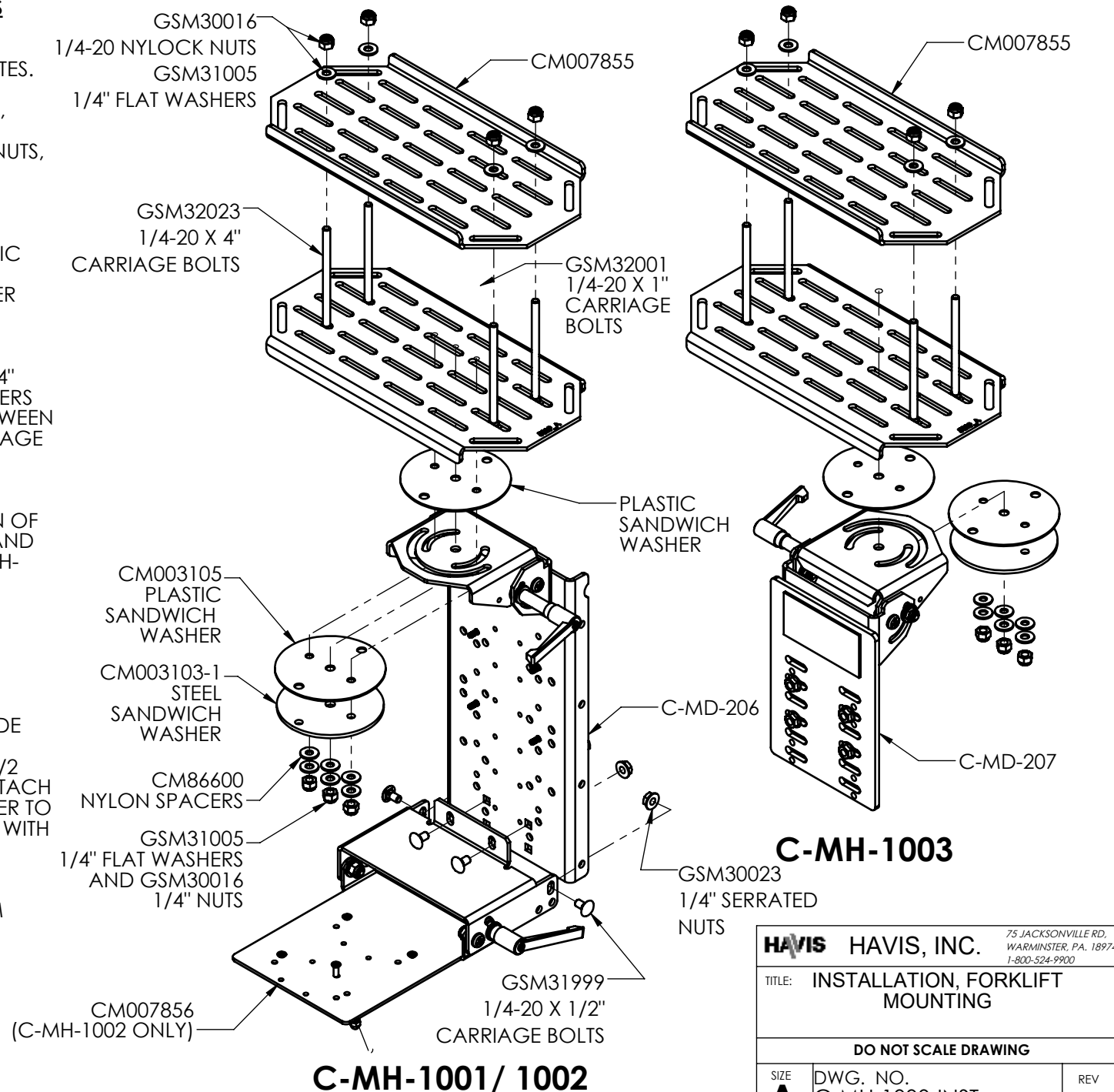


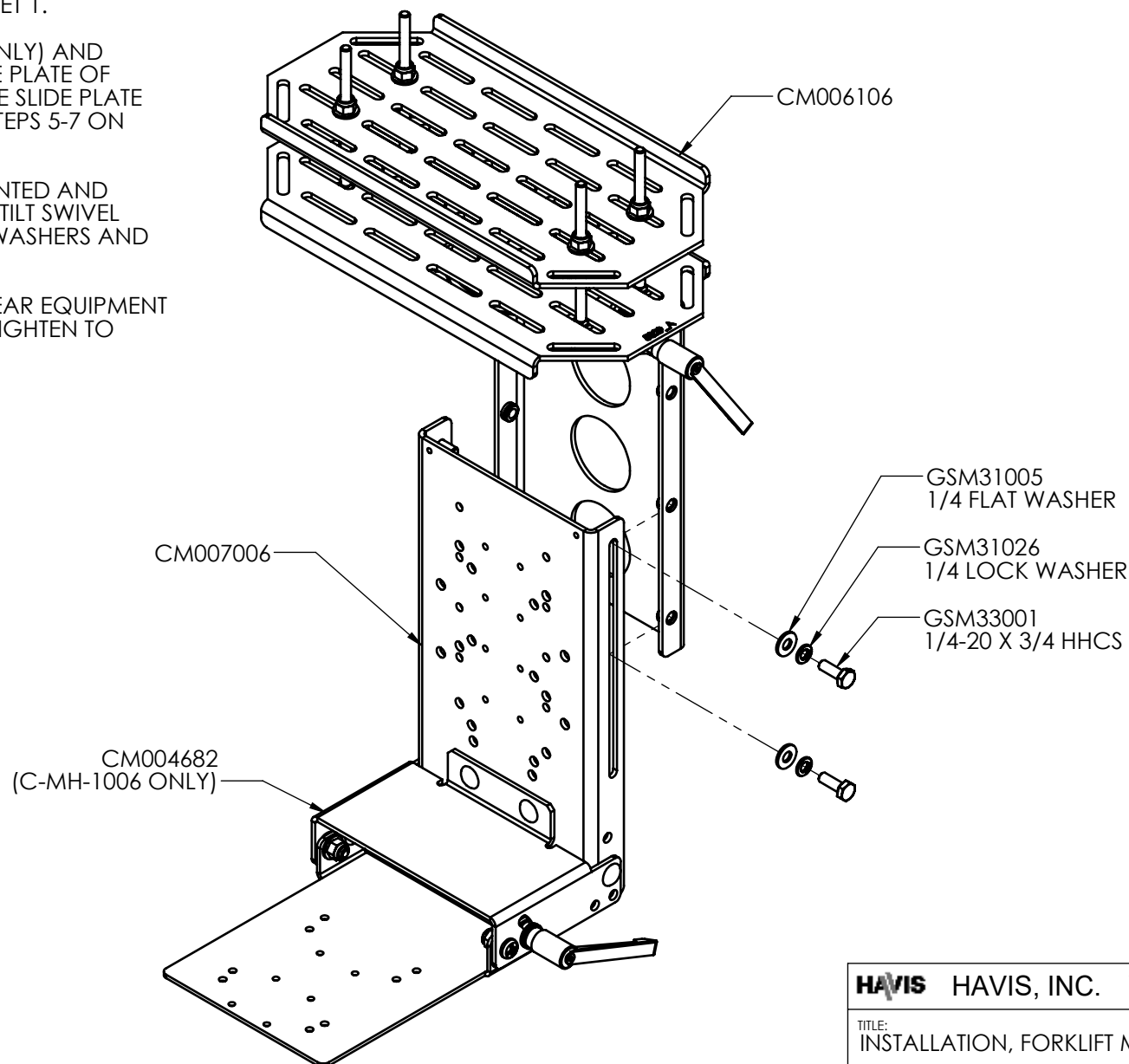
## INSTALLATION/ ASSEMBLY INSTRUCTIONS

1. DETERMINE LOCATION AND ORIENTATION OF TOP MOUNT PLATES.
2. USING 1/4-20X1" CARRIAGE BOLTS, HDM SANDWICH WASHERS, 1/4" NYLON SPACERS, WASHERS AND NUTS, ATTACH TILT SWIVEL TO LOWER MOUNTING PLATE. ONE PLASTIC SANDWICH WASHER IS INSTALLED BETWEEN TILT SWIVEL BASE AND MOUNTING PLATE, SECOND PLASTIC SANDWICH WASHER IS INSTALLED BETWEEN STEEL SANDWICH WASHER AND TILT-SWIVEL BASE.
3. ASSEMBLE MOUNTING PLATES TO OVERHEAD CAGE USING 1/4-20 X4" CARRIAGE BOLTS, 1/4" FLAT WASHERS AND NUTS, CAPTURING CAGE BETWEEN PLATES. EXCESS LENGTH OF CARRIAGE BOLTS MAY BE CUT OFF AFTER TIGHTENING IF DESIRED.
4. INSTALL PLATE TO LOWER PORTION OF TILT SWIVEL USING 1/4" WASHERS AND NYLOCK NUTS SUPPLIED WITH C-MH-1001 OR C-MH-1002 KIT.
5. IF USING C-MH-1002, ATTACH CM007856 KEYBOARD MOUNT TO ADAPTER PLATE WITH SUPPLIED HARDWARE.
6. ATTACH OPTIONAL C-KBM-100 SLIDE BASE TO CM007856 KEYBOARD ADAPTER WITH INCLUDED 8-32 X 1/2 FLAT HEAD SCREWS AND NUTS. ATTACH C-KBM-100 PVC PLATE AND SPACER TO KEYBOARD (HARDWARE SUPPLIED WITH C-KBM-100)
7. MOUNT TABLET DOCK TO MOTION DEVICE PLATE WITH SUPPLIED 4MM SCREWS.
8. ROUTE AND SECURE WIRING AS DESIRED.



## ASSEMBLY OF C-MH-1005/1006

1. INSTALL MOUNTING PLATES AND TILT SWIVEL ACCORDING TO STEPS 1-3 ON SHEET 1.
2. KEYBOARD MOUNT (C-MH-1005 ONLY) AND DOCK ARE INSTALLED TO THE SLIDE PLATE OF CM007006 BEFORE ATTACHING THE SLIDE PLATE TO THE MOUNT ACCORDING TO STEPS 5-7 ON SHEET 1.
3. AFTER EQUIPMENT HAS BEEN MOUNTED AND SECURED, ATTACH SLIDE PLATE TO TILT SWIVEL USING 4 1/4-20 X 3/4 BOLTS, FLAT WASHERS AND LOCK WASHERS AS SHOWN.
4. POSITION SLIDE AS DESIRED TO CLEAR EQUIPMENT AND DOCK RELEASE LEVER, AND TIGHTEN TO SECURE.



**C-MH-1005/ 1006**

**HAVIS** HAVIS, INC. 75 JACKSONVILLE RD.  
WARMINSTER, PA. 18974  
1-800-524-9900

TITLE:  
INSTALLATION, FORKLIFT MOUNTING

DO NOT SCALE DRAWING

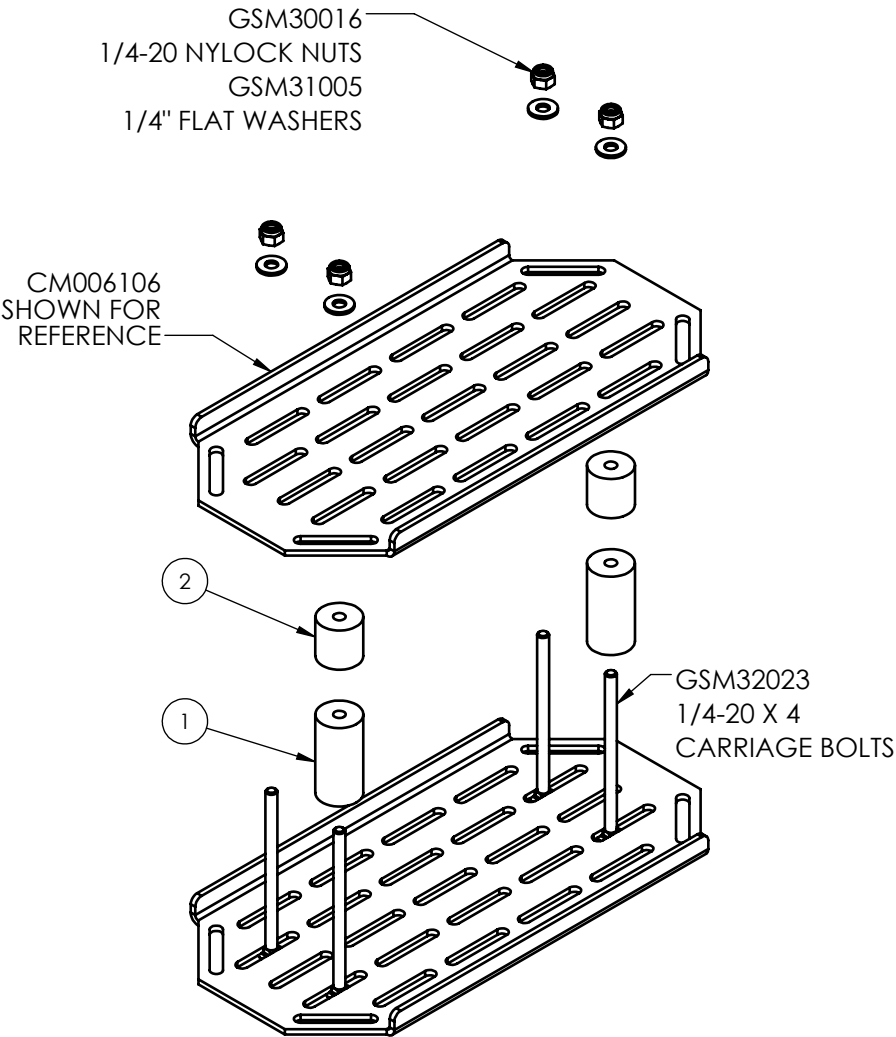
SIZE <b>A</b>	DWG. NO. C-MH-1000-INST	REV 10-17
WEIGHT (LB): 7.06	SCALE: 1:5	SHEET 2 OF 4

**CM007858 SPACER KIT INSTALLATION:**

- 1. INSTALL SPACERS ONTO BOLTS BETWEEN PLATES AS NEEDED TO ALLOW PLATES TO REMAIN PARALLEL WHEN INSTALLED ONTO FORKLIFT CAGE.
- 2. 2 EACH OF 1" AND 2" SPACERS ARE INCLUDED IN THE KIT.
- 3. SPACERS MAY BE USED SINGLY, TOGETHER OR BE CUT AT INSTALLATION TO MATCH THE REQUIRED DIMENSION.



**NOTE:** SPACERS ARE ONLY REQUIRED IF THE CLAMP MOUNTING SURFACE IS UNEVEN AS SHOWN IN THE PHOTO. THIS WILL ALLOW MOTION DEVICE TO BE LEVEL FOR PREFERRED POSITIONING.



ITEM NO.	QTY.	PART NUMBER	DESCRIPTION
1	2	10-007172	SPACER, 2"
2	2	10-007171	SPACER, 1"

**HAVIS** HAVIS, INC.

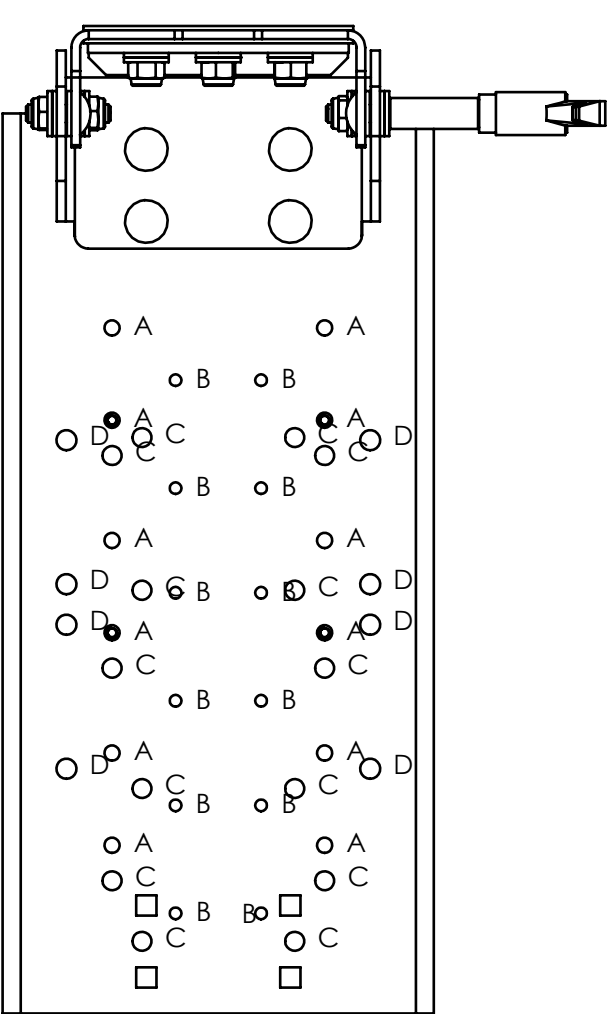
75 JACKSONVILLE RD.  
WARMINSTER, PA. 18974  
1-800-524-9900

TITLE:  
INSTALLATION, FORKLIFT MOUNTING

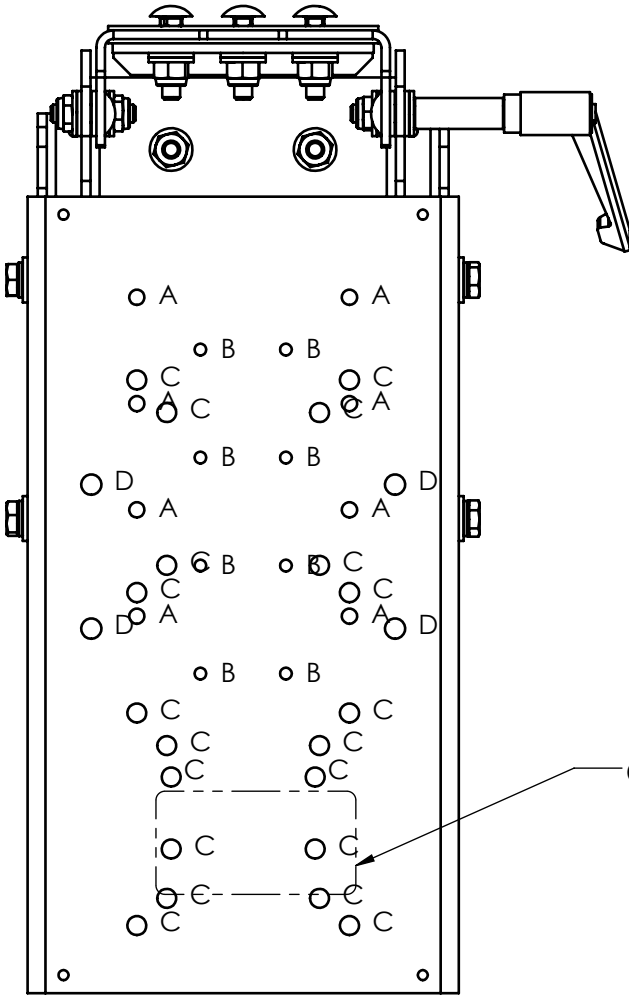
DO NOT SCALE DRAWING

SIZE <b>A</b>	DWG. NO. C-MH-1000-INST	REV 10-17
WEIGHT (LB): 12.75	SCALE: 1:4	SHEET 3 OF 4

EQUIPMENT MOUNTING HOLE PATTERNS



C-MH-1001 AND C-MH-1002



C-MH-1005 AND C-MH-1006

C-MM-301 PATTERN

TAG	SIZE	QTY	NOTES
A	Ø .213 THRU	12	VESA75 PATTERN
B	Ø .163 THRU	12	AMPS PATTERN
C	Ø .265 THRU	14	UT-101 AND CF-20 PATTERN
D	Ø .281 THRU	8	4.218 X 2.00 PATTERN

**HAVIS** HAVIS, INC.

75 JACKSONVILLE RD.  
WARMINSTER, PA. 18974  
1-800-524-9900

TITLE:  
INSTALLATION, FORKLIFT MOUNTING

DO NOT SCALE DRAWING

SIZE  
**A**

DWG. NO.  
C-MH-1000-INST

REV  
10-17

WEIGHT (LB): 20.23

SCALE: 1:4

SHEET 4 OF 4