

INSTALLATION INSTRUCTIONS C-OHC-INUT-1

Overhead console for 2020+ Ford Interceptor Utility and 2020+ Ford Explorer

TOOLS REQUIRED:

Panel removal tool
Marker

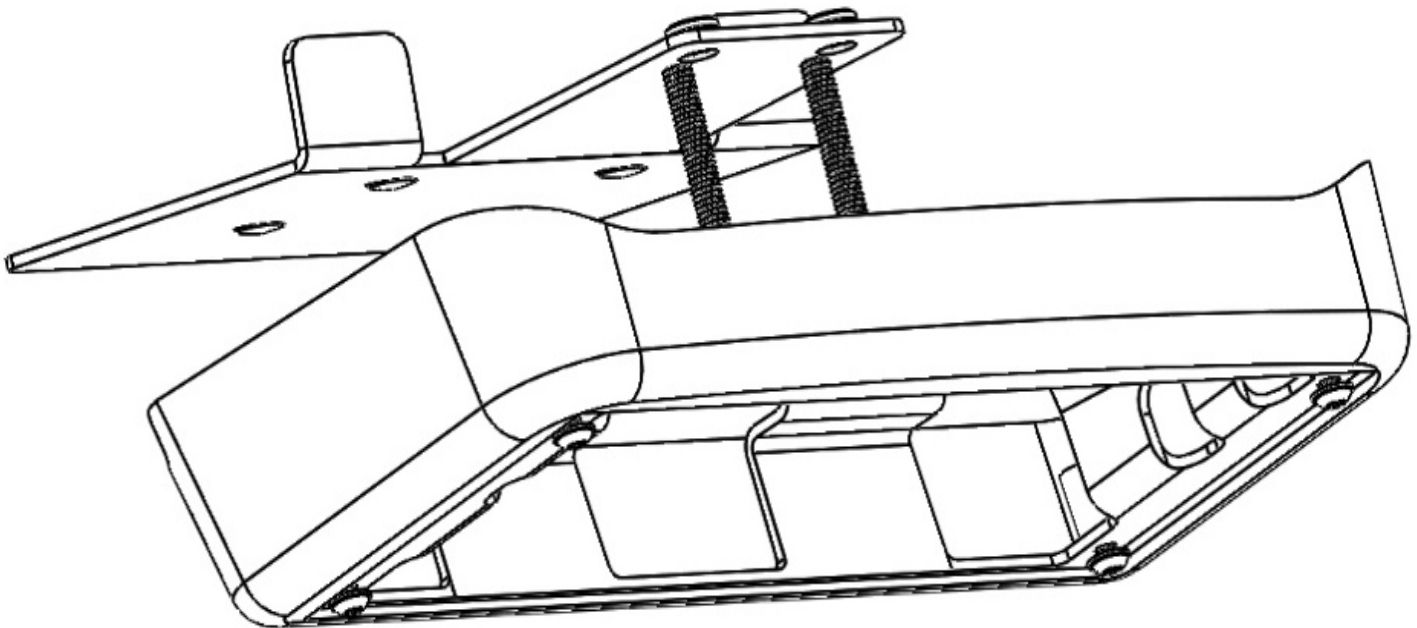
Phillips screwdriver
Drill & 1/8" drill bit

T-20 Torx driver
Drill stop

PARTS and MOUNTING HARDWARE:

<u>QTY</u>	<u>DESCRIPTION</u>	<u>PART#</u>
1	Backing plate	CM010389
1	Overhead console shroud	CM010456
2	1/4" x 2.25" Phillips head bolt	GSM34127
2	1/4" Split lock washer	GSM31315
2	1/4" x 1" Fender washer	GSM31324
6	3/16" Rivet	GSM32108
4	M4 x 12mm Phillips head self-threading screw	GSM34427

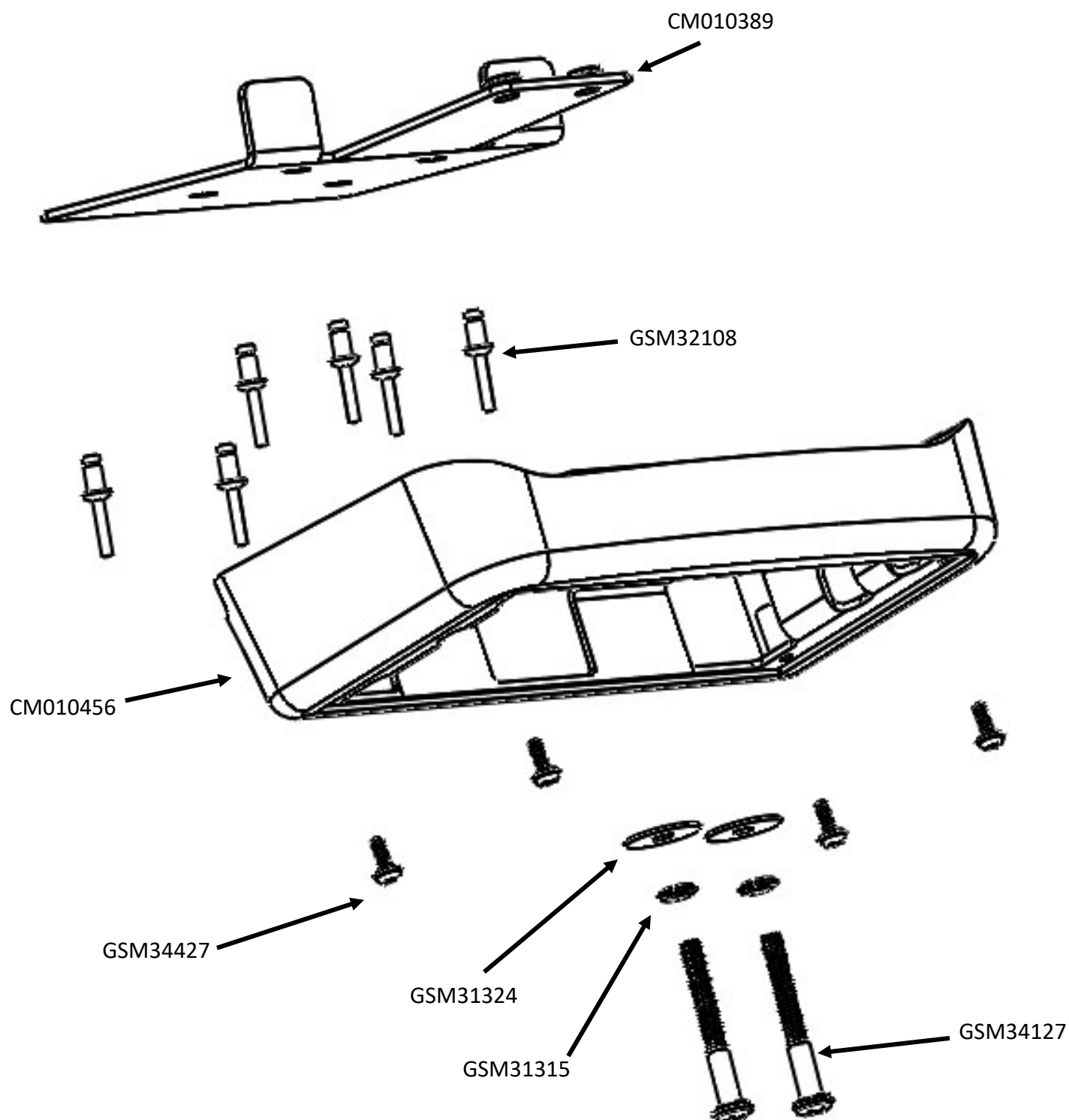
Note: Face plate for specific control head must be purchased separately.



Always!

- Read all instructions before installing any Havis, Inc. products.
- **Check for obstructions (Wires, brake lines, fuel tank, etc.) before drilling any holes!**
- Use hardware provided with install kit

C-OHC-INUT-1





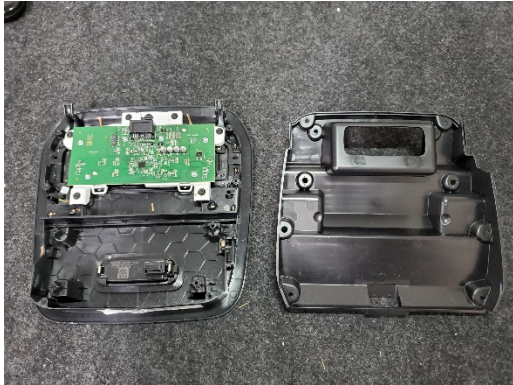
View of OEM overhead console prior to install



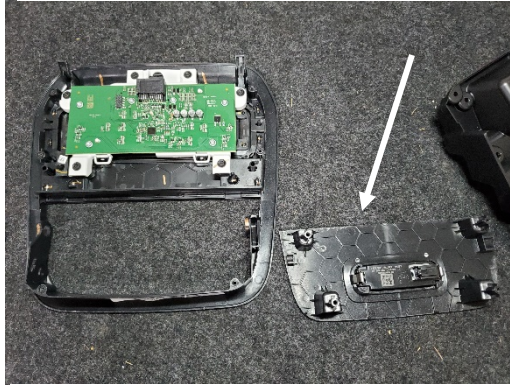
Remove OEM overhead console by gently prying on sides with panel removal tool.



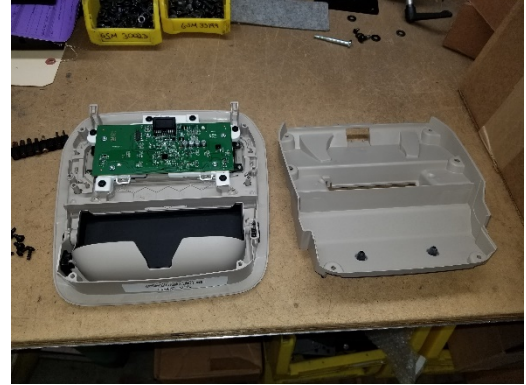
Remove (10) T-20 Torx head screws from rear cover.



Detach rear cover plate



Remove the rear dome light section of the console at this time.



For the Retail Explorer console, remove the rear cover in the same manner.



Remove Explorer sunglasses tray



Reattach rear cover to console with previously removed Torx screws.
(Explorer and Interceptor Utility shown.)



Route necessary wiring at this time through opening in headliner.



Place backing plate into opening in headliner.



Use backing plate as a template to mark mounting hole locations on OEM metal cross brace.



Use 3/16" bit to carefully drill (4) mounting holes in OEM cross brace.
Note: Use drill stop to prevent drill bit from touching outer body roof.
The metal on the brace is hardened; use of a sharp drill bit is required.



Insert (4) 3/16" rivets into the roof brace.

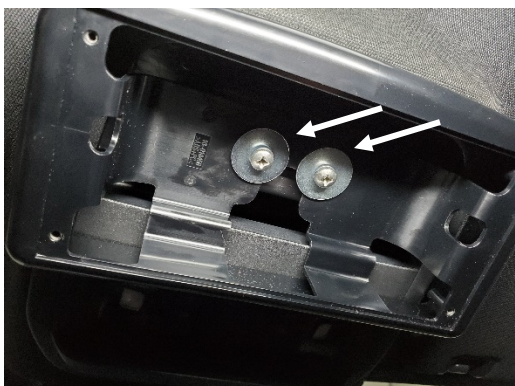
Note: Two extra rivets are included in the hardware kit.



Reinstall OEM overhead center console. Backing plate should be visible through opening.



Place new overhead console shroud up to headliner and line up to holes in the backing plate.



Attach console shroud to backing plate with 1/4" x 2.25" Phillips bolts, split lock washers, and fender washers.



The bolts should be tight enough to compress the lock washers.
(Do not over-tighten)



Attach control head to face plate, connect wiring and mount using (4) M4 x 12mm self-threading screws.
Installation is now complete