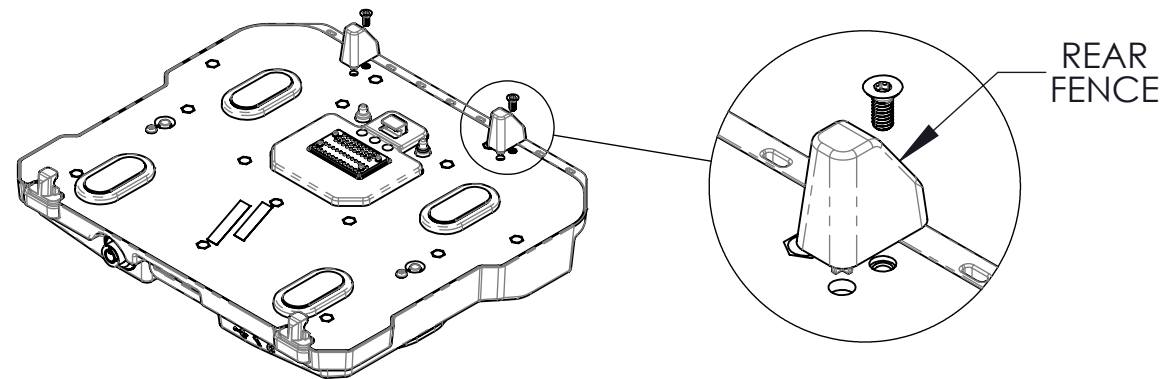


INSTALLATION INSTRUCTIONS (DS-DELL-400 & 410):

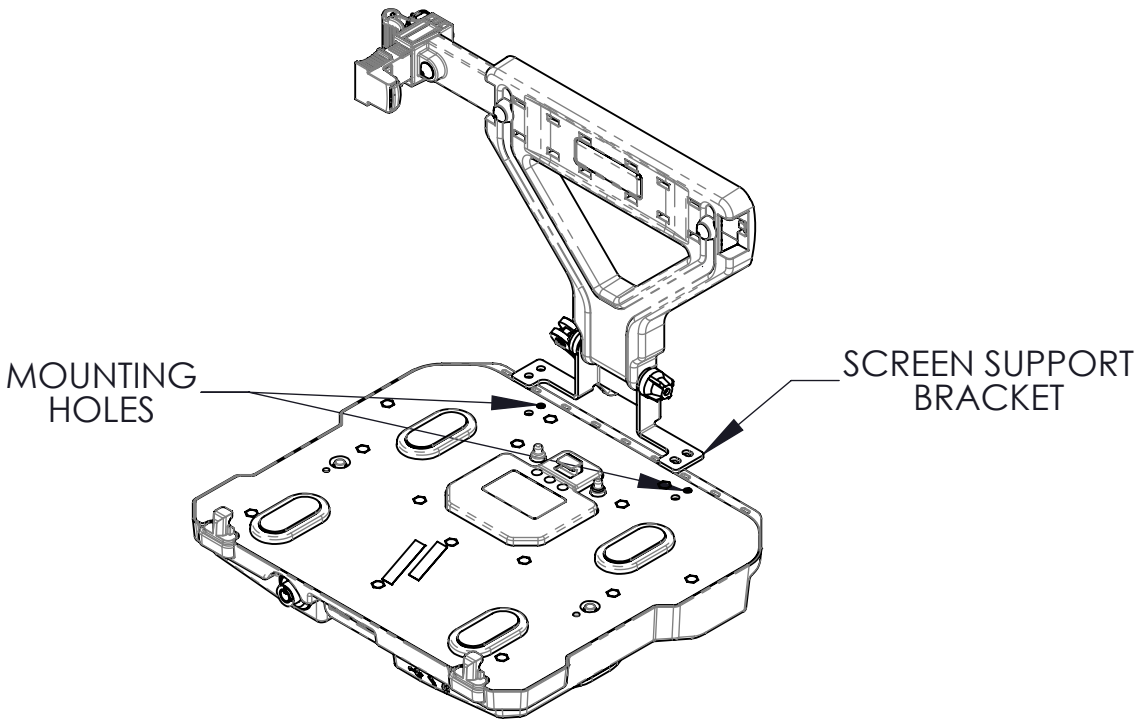
NOTE: The depicted docking station may not match identically with the purchased product. However, all installation instructions are still applicable (unless otherwise noted).

NOTE: When a pre-applied thread-locking patch is not present on hardware, it is recommended to apply a drop of medium strength (blue) thread locking adhesive to the threads of the hardware prior to assembly.

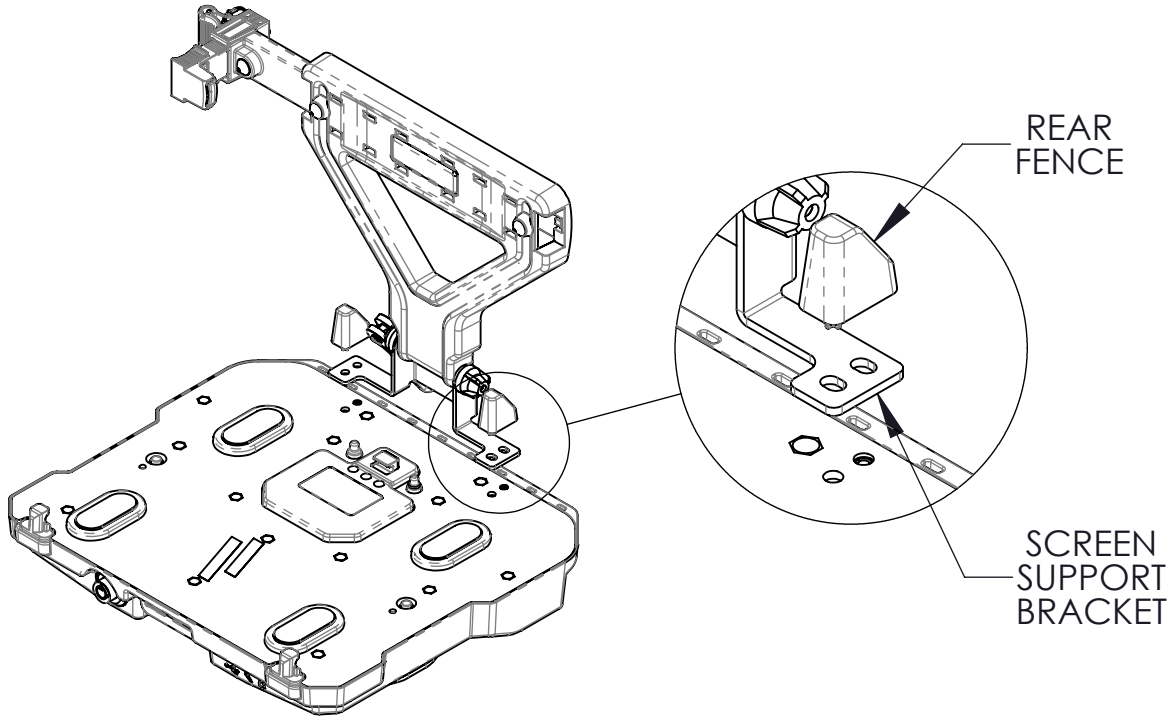
STEP 1: USING A T15 TORX BIT, REMOVE REAR FENCES AND HARDWARE FROM DOCKING STATION. DISCARD HARDWARE BUT RETAIN REAR FENCES.



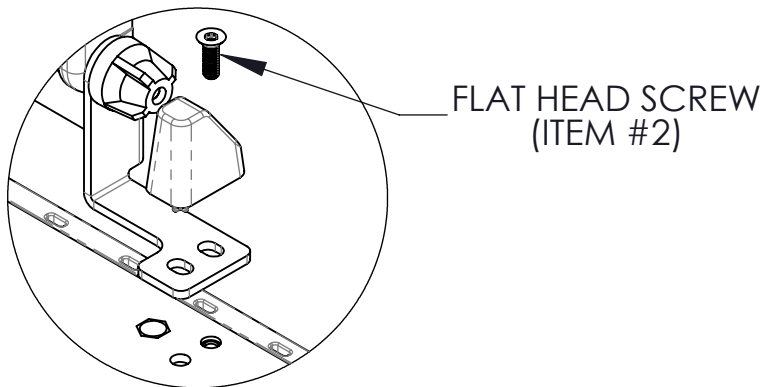
STEP 2: ALIGN MOUNTING HOLES OF SCREEN SUPPORT BRACKET WITH MOUNTING HOLES OF DOCKING STATION.



STEP 3: PLACE BOTH REAR FENCES OVER SCREEN SUPPORT BRACKET IN ORIGINAL ORIENTATION.



STEP 4: USING A T15 TORX BIT, INSTALL BOTH FLAT HEAD SCREWS THROUGH REAR FENCE, BRACKET, AND INTO DOCK. TORQUE TO 20 IN-LBS ± 10%.



STEP 5: SEE PAGES 3-4 FOR ADJUSTMENT INSTRUCTIONS

HARDWARE KIT CONTENTS:

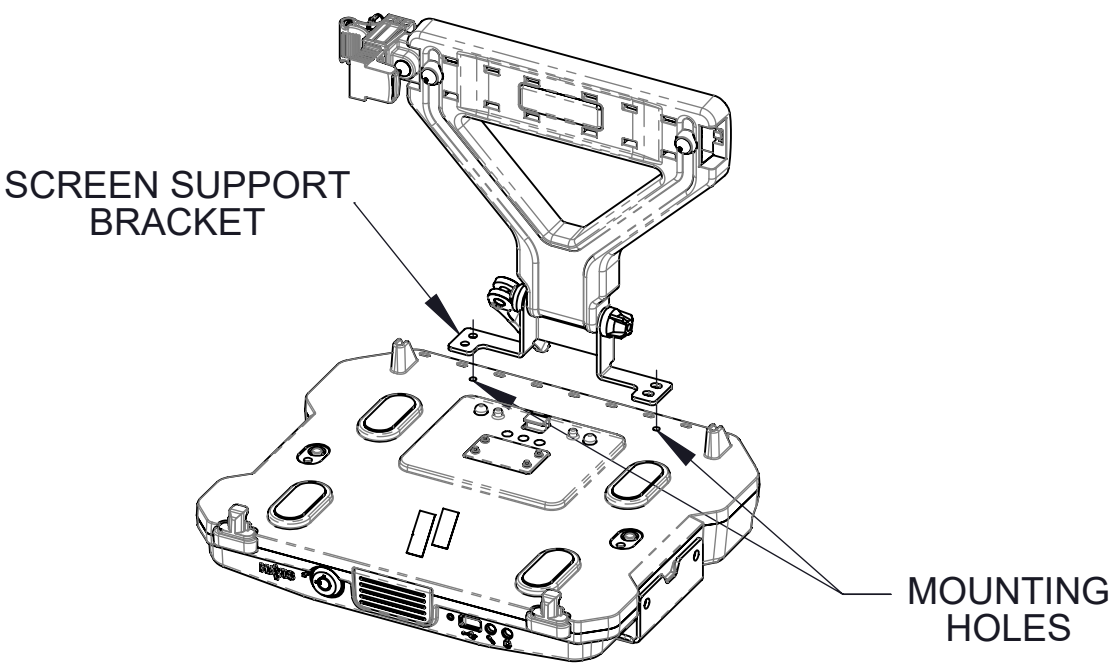
LINE	QTY.	DESCRIPTION	DRIVE STYLE/SIZE
1	2	#8-32 X 3/4 PAN HEAD SCREW	#2 PHILLIPS
2	2	#8-32 X 1/2 FLAT HEAD SCREW	T15 TORX
3	2	#8-32 NYLOC NUT	N/A

WARNING: ALL HAVIS INC. PRODUCTS ARE DESIGNED WITH SAFETY OF USE AND INSTALLATION IN MIND. HOWEVER, IT IS THE SOLE RESPONSIBILITY OF THE OWNER/OPERATOR OF A VEHICLE USING HAVIS INC. MOUNTING AND DOCKING EQUIPMENT, TO INSURE THAT THE EQUIPMENT IS INSTALLED SO THAT IT WILL NOT INTERFERE WITH VEHICLE OPERATION, INTERFERE WITH SAFETY DEVICES, OBSTRUCT VIEW OF DRIVING CONDITIONS, OR IN ANY WAY DEGRADE OCCUPANT SAFETY. IMPROPER INSTALLATION CAN CAUSE SERIOUS INJURY IN THE EVENT OF AN ACCIDENT. INSTALLATION SHOULD ONLY BE PERFORMED BY QUALIFIED PROFESSIONALS. COMPUTERS AND MOTION DEVICES MUST BE MOVED TO AND STOWED/SECURED IN THEIR SAFE DRIVING POSITIONS BEFORE OPERATING VEHICLE.

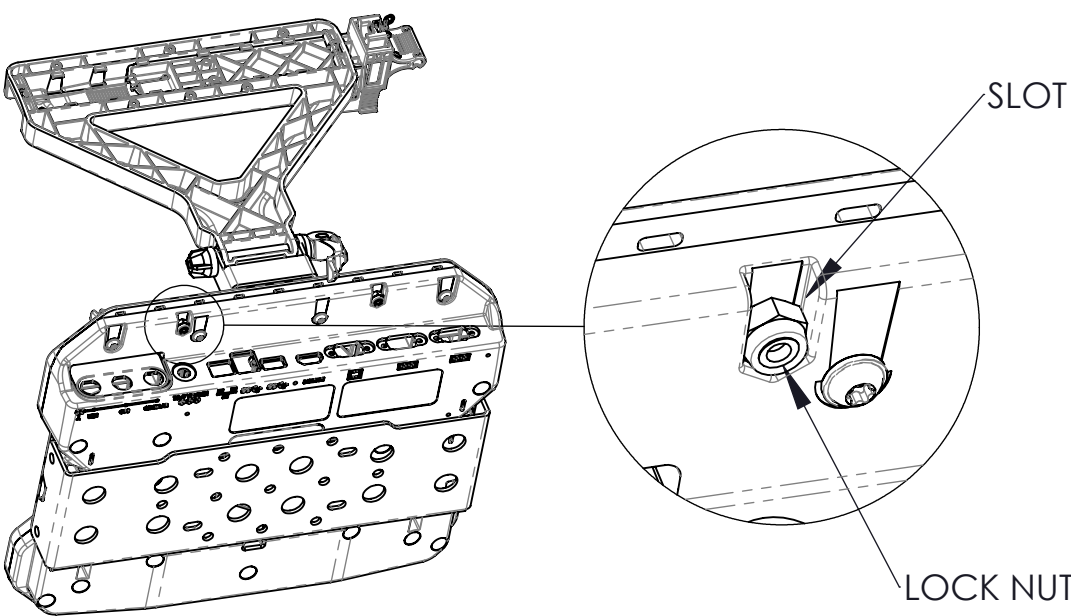
DRAWING NO.	DS-DA-412_INST_1-22
PRODUCT DESCRIPTION	SCREEN SUPPORT, DS-DELL-400/410/420
 1-800-524-9900 WWW.HAVIS.COM	WEIGHT: (LBS) 1 REV. DATE 01-10-22

INSTALLATION INSTRUCTIONS (DS-DELL-420):

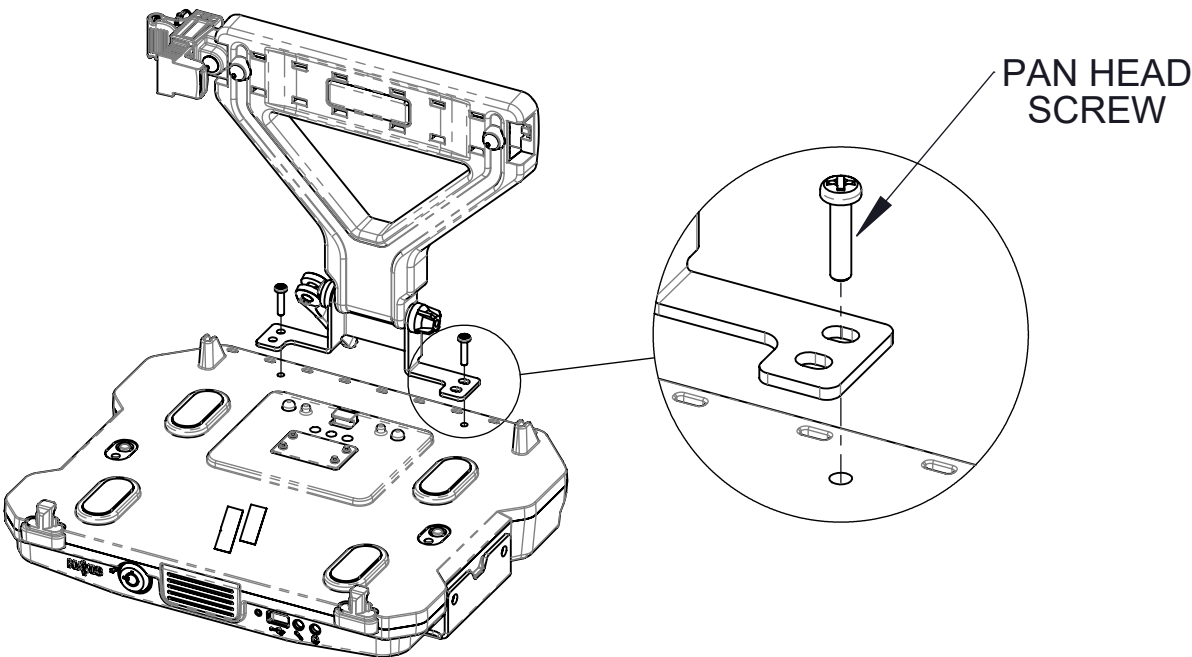
STEP 1: ALIGN MOUNTING HOLES OF SCREEN SUPPORT BRACKET WITH MOUNTING HOLES OF DOCKING STATION.



STEP 2: POSITION A LOCK NUT WITHIN SLOT BELOW MOUNTING HOLE. ENSURE THAT FLAT SIDE OF LOCK NUT IS FACING INWARDS.



STEP 3: WHILE HOLDING LOCK NUT AND SCREEN SUPPORT BRACKET IN PLACE, FASTEN A PAN HEAD SCREW THROUGH MOUNTING HOLE AND LOCK NUT. TORQUE TO 20 IN-LBS ±10%.



STEP 4: REPEAT STEPS 1-3 WITH SECOND LOCK NUT AND PAN HEAD SCREW.

STEP 5: SEE PAGES 3-4 FOR ADJUSTMENT INSTRUCTIONS

HARDWARE KIT CONTENTS:

LINE	QTY.	DESCRIPTION	DRIVE STYLE/SIZE
1	2	#8-32 X 3/4 PAN HEAD SCREW	#2 PHILLIPS
2	2	#8-32 X 1/2 FLAT HEAD SCREW	T15 TORX
3	2	#8-32 NYLOC NUT	N/A

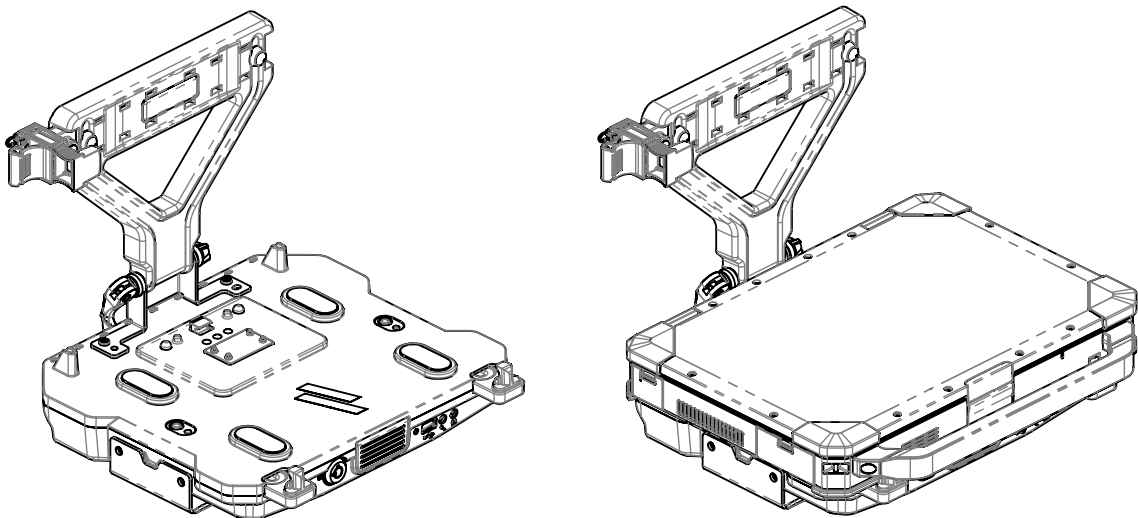
WARNING: ALL HAVIS INC. PRODUCTS ARE DESIGNED WITH SAFETY OF USE AND INSTALLATION IN MIND. HOWEVER, IT IS THE SOLE RESPONSIBILITY OF THE OWNER/OPERATOR OF A VEHICLE USING HAVIS INC. MOUNTING AND DOCKING EQUIPMENT, TO INSURE THAT THE EQUIPMENT IS INSTALLED SO THAT IT WILL NOT INTERFERE WITH VEHICLE OPERATION, INTERFERE WITH SAFETY DEVICES, OBSTRUCT VIEW OF DRIVING CONDITIONS, OR IN ANY WAY DEGRADE OCCUPANT SAFETY. IMPROPER INSTALLATION CAN CAUSE SERIOUS INJURY IN THE EVENT OF AN ACCIDENT. INSTALLATION SHOULD ONLY BE PERFORMED BY QUALIFIED PROFESSIONALS. COMPUTERS AND MOTION DEVICES MUST BE MOVED TO AND STOWED/SECURED IN THEIR SAFE DRIVING POSITIONS BEFORE OPERATING VEHICLE.

DRAWING NO. DS-DA-412_INST_1-22	
PRODUCT DESCRIPTION SCREEN SUPPORT, DS-DELL-400/410/420	
 1-800-524-9900 WWW.HAVIS.COM	WEIGHT: (LBS) 1
	REV. DATE 01-10-22

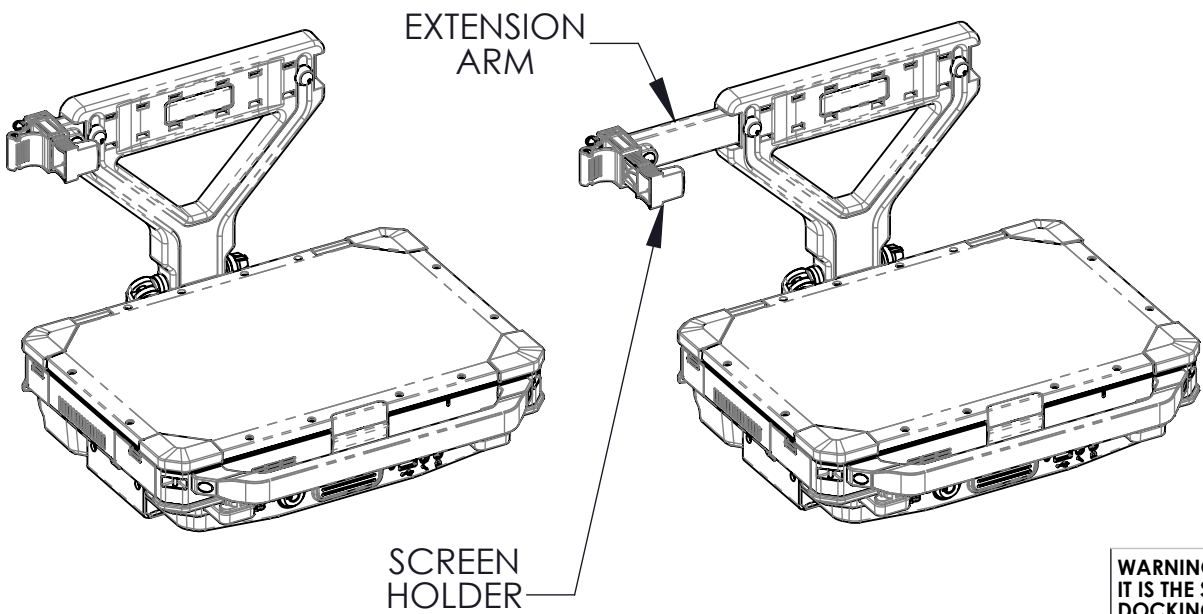
ADJUSTMENT INSTRUCTIONS:

NOTE: Screen holder is designed to be detached and held by tether when screen is closed.
NOTE: Clamp is tightened by loosening lever arm, rotating nut, and retightening lever arm.

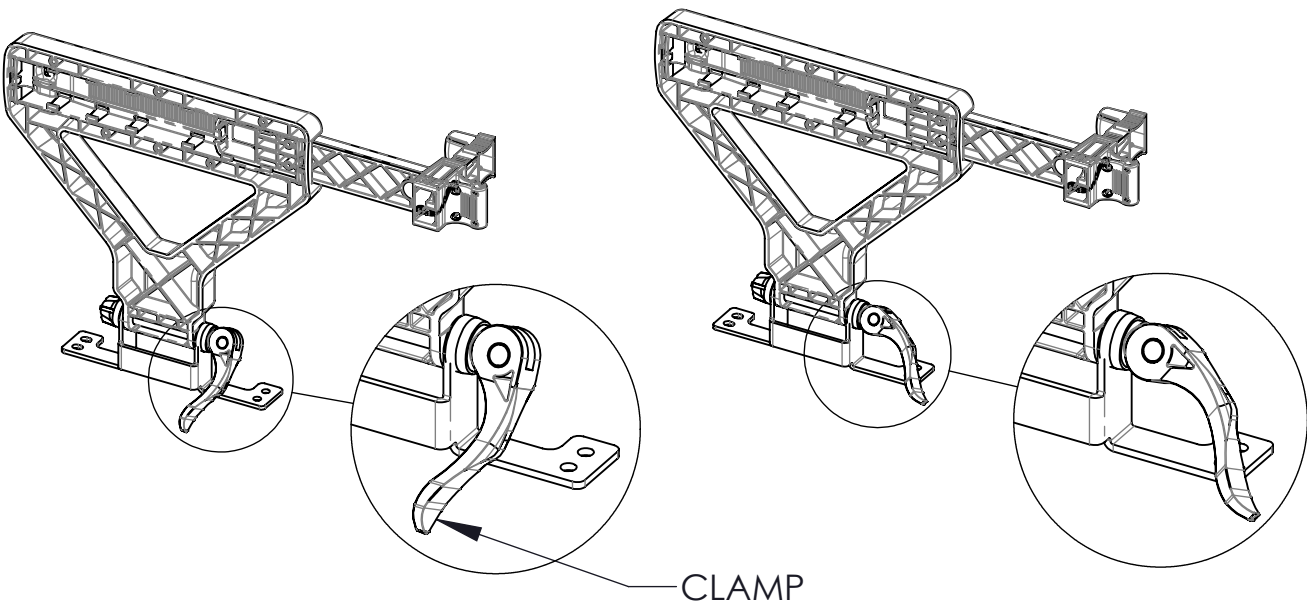
STEP 1: DOCK LAPTOP INTO DOCKING STATION.



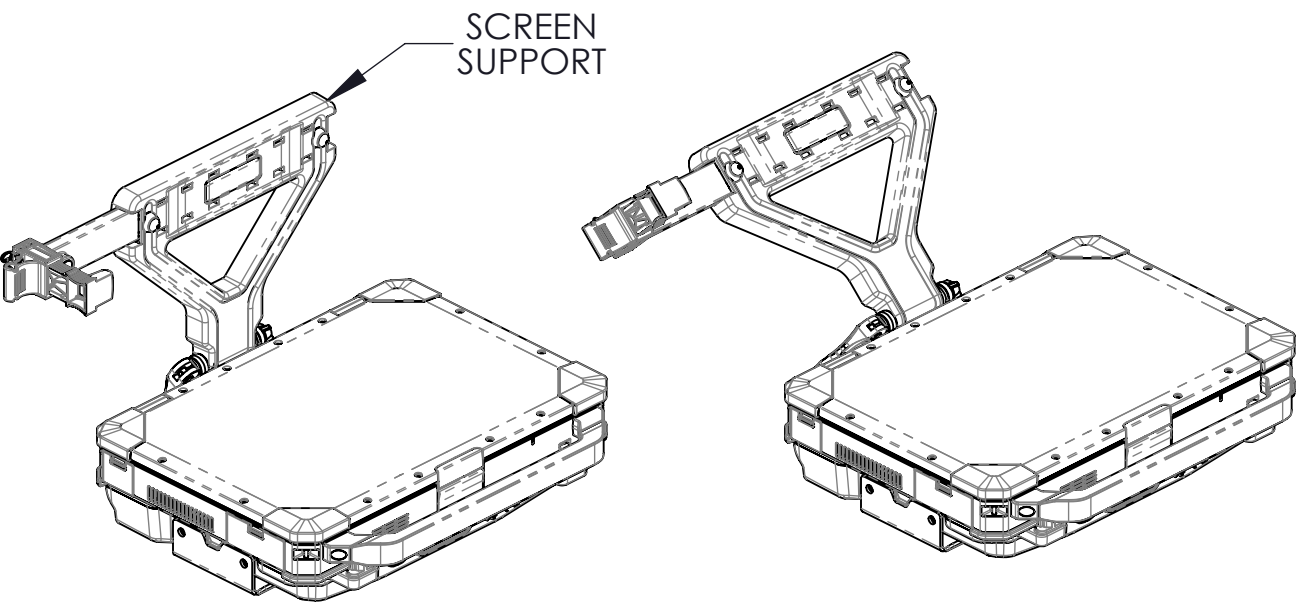
STEP 2: EXTEND EXTENSION ARM AND SCREEN HOLDER TO MAX LENGTH WITHOUT REMOVING FROM SLOT.




STEP 3: LOOSEN CLAMP



STEP 4: ROTATE THE SCREEN SUPPORT BACKWARDS.

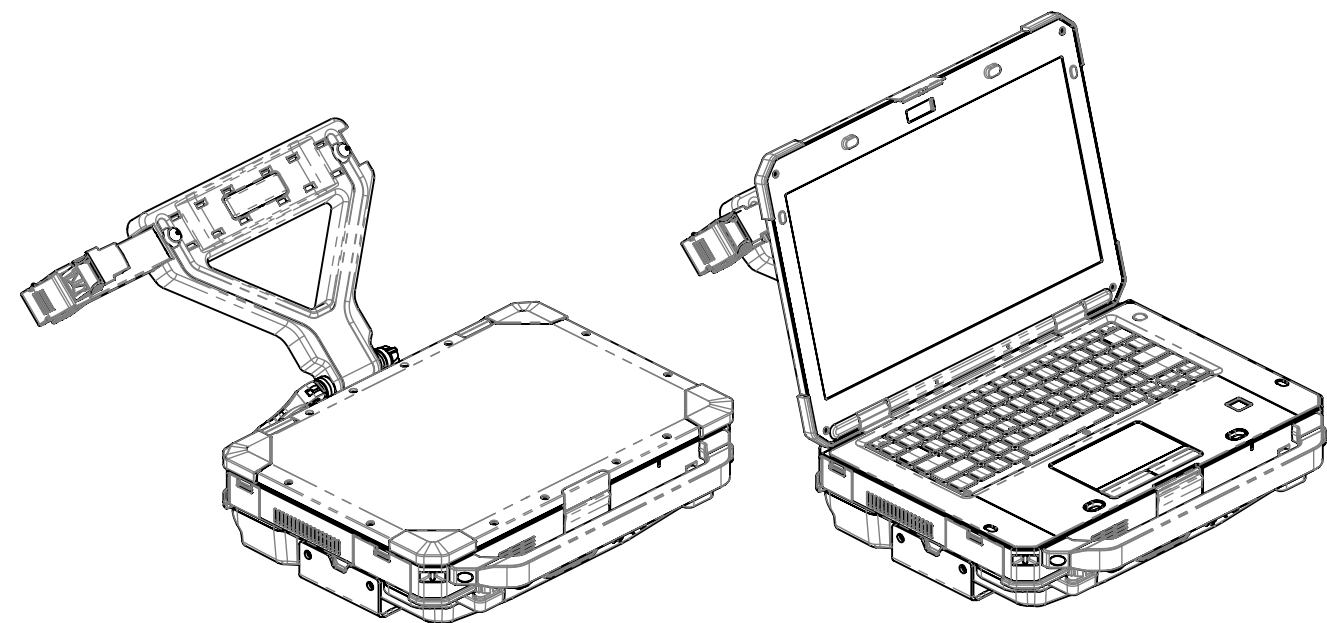


WARNING: ALL HAVIS INC. PRODUCTS ARE DESIGNED WITH SAFETY OF USE AND INSTALLATION IN MIND. HOWEVER, IT IS THE SOLE RESPONSIBILITY OF THE OWNER/OPERATOR OF A VEHICLE USING HAVIS INC. MOUNTING AND DOCKING EQUIPMENT, TO INSURE THAT THE EQUIPMENT IS INSTALLED SO THAT IT WILL NOT INTERFERE WITH VEHICLE OPERATION, INTERFERE WITH SAFETY DEVICES, OBSTRUCT VIEW OF DRIVING CONDITIONS, OR IN ANY WAY DEGRADE OCCUPANT SAFETY. IMPROPER INSTALLATION CAN CAUSE SERIOUS INJURY IN THE EVENT OF AN ACCIDENT. INSTALLATION SHOULD ONLY BE PERFORMED BY QUALIFIED PROFESSIONALS. COMPUTERS AND MOTION DEVICES MUST BE MOVED TO AND STOWED/SECURED IN THEIR SAFE DRIVING POSITIONS BEFORE OPERATING VEHICLE.

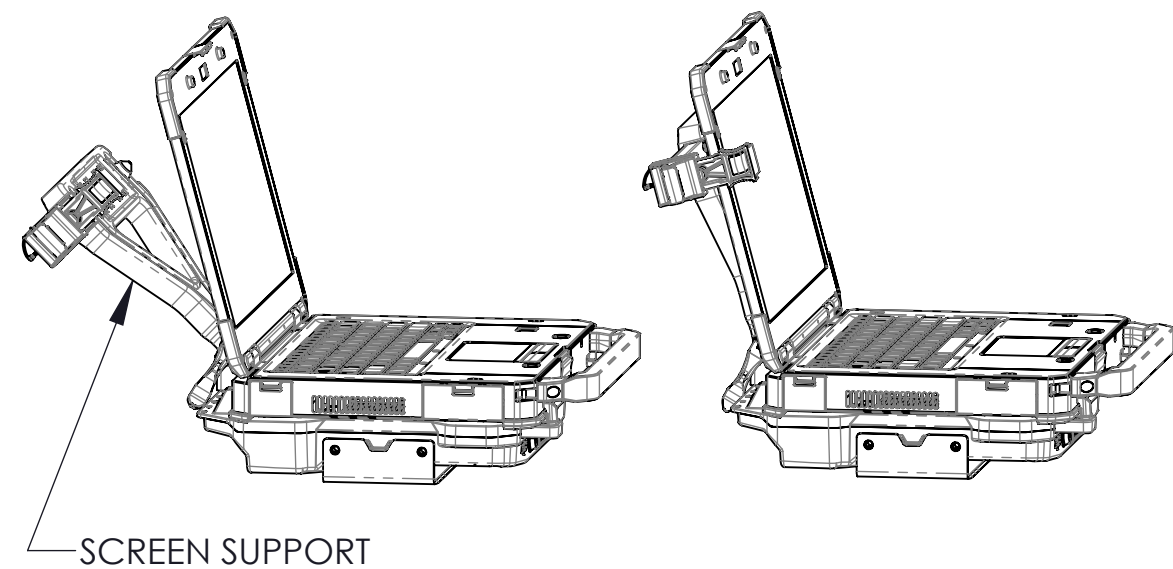
DRAWING NO. DS-DA-412_INST_1-22	
PRODUCT DESCRIPTION SCREEN SUPPORT, DS-DELL-400/410/420	
 1-800-524-9900 WWW.HAVIS.COM	WEIGHT: (LBS) 1
	REV. DATE 01-10-22

ADJUSTMENT INSTRUCTIONS:

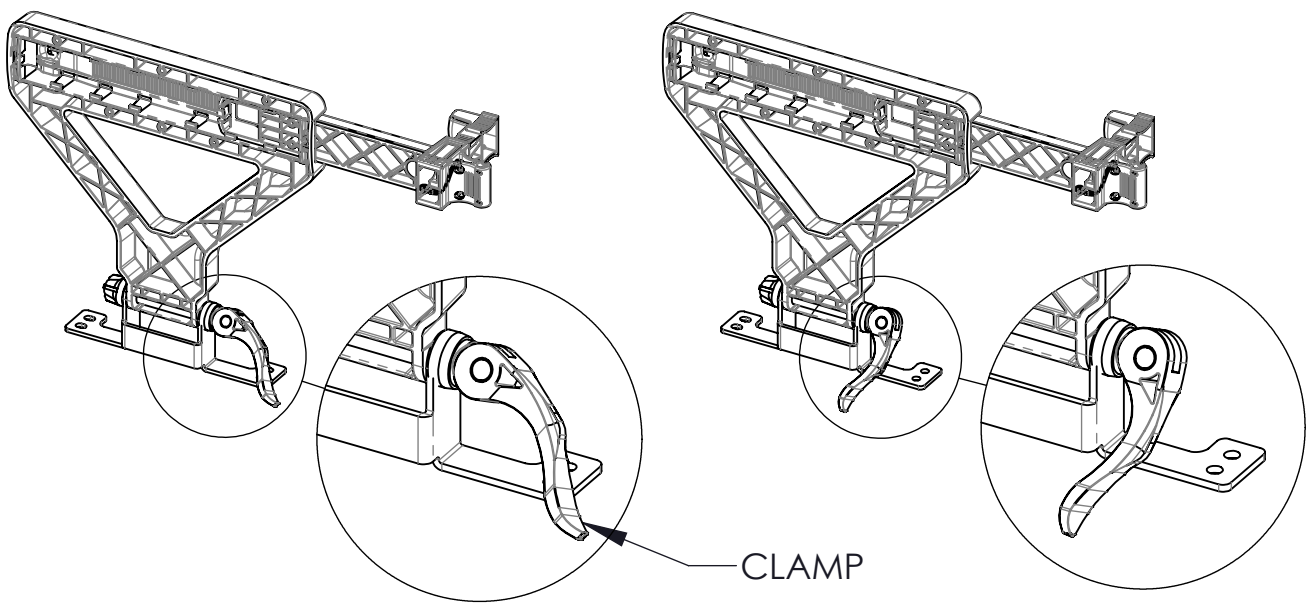
STEP 5: ROTATE LAPTOP SCREEN TO DESIRED ANGLE.



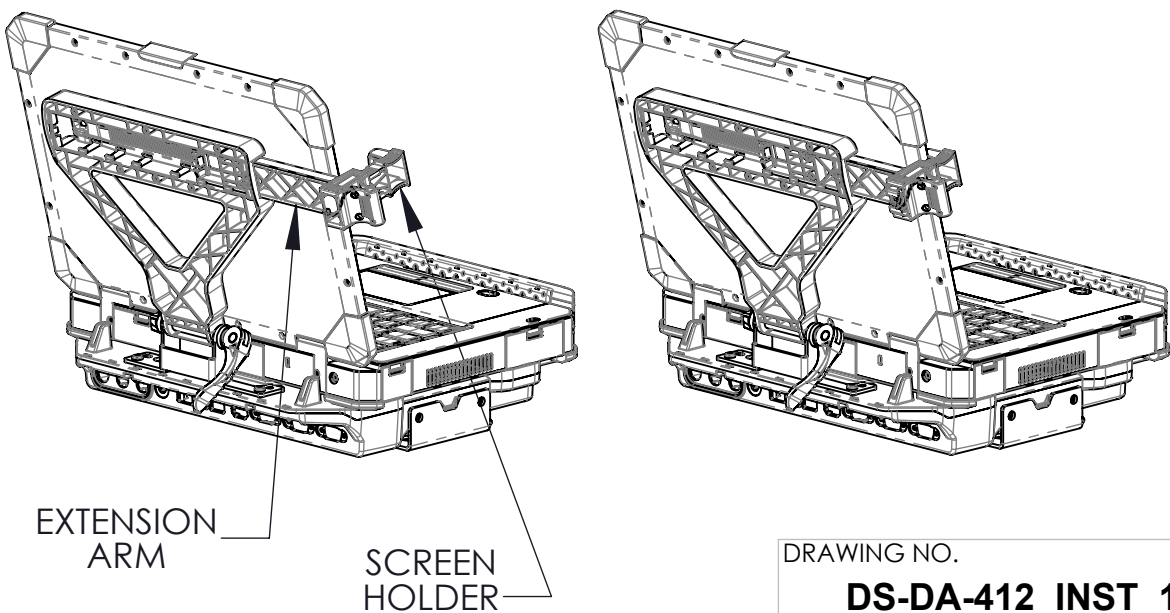
STEP 6: ROTATE SCREEN SUPPORT UNTIL CONTACT WITH BACK OF LAPTOP SCREEN.



STEP 7: TIGHTEN CLAMP.



STEP 8: RETRACT EXTENSION ARM AND SCREEN HOLDER UNTIL TIGHT FIT WITH LAPTOP SCREEN.



WARNING: ALL HAVIS INC. PRODUCTS ARE DESIGNED WITH SAFETY OF USE AND INSTALLATION IN MIND. HOWEVER, IT IS THE SOLE RESPONSIBILITY OF THE OWNER/OPERATOR OF A VEHICLE USING HAVIS INC. MOUNTING AND DOCKING EQUIPMENT, TO INSURE THAT THE EQUIPMENT IS INSTALLED SO THAT IT WILL NOT INTERFERE WITH VEHICLE OPERATION, INTERFERE WITH SAFETY DEVICES, OBSTRUCT VIEW OF DRIVING CONDITIONS, OR IN ANY WAY DEGRADE OCCUPANT SAFETY. IMPROPER INSTALLATION CAN CAUSE SERIOUS INJURY IN THE EVENT OF AN ACCIDENT. INSTALLATION SHOULD ONLY BE PERFORMED BY QUALIFIED PROFESSIONALS. COMPUTERS AND MOTION DEVICES MUST BE MOVED TO AND STOWED/SECURED IN THEIR SAFE DRIVING POSITIONS BEFORE OPERATING VEHICLE.

DRAWING NO.
DS-DA-412_INST_1-22
PRODUCT DESCRIPTION
SCREEN SUPPORT, DS-DELL-400/410/420

HAVIS
1-800-524-9900
WWW.HAVIS.COM

WEIGHT: (LBS)
1
REV. DATE
01-10-22