

CABLE CLIP AND ATTACHMENT SCREW

2X M3 X 6MM LONG PHILLIPS SCREWS

CUSTOMER'S VERIFONE P200/P400
(VERIFONE P200 SHOWN FOR REFERENCE)

4X #12 X 2.00 LONG
PHILLIPS FLAT HEAD SCREWS

SWIVELS 180°

Ø 1.39
CABLE
EXIT/ENTRY

BOTTOM VIEW

(53°)

(7.81)

(1.73)

(3.50)

(1.41)

.24
SMART CARD
CLEARANCE

(3.50)

(6.33)

(21°)

(1.19)

(3.50)

(1.24)

(5.93)

ROHS COMPLIANT

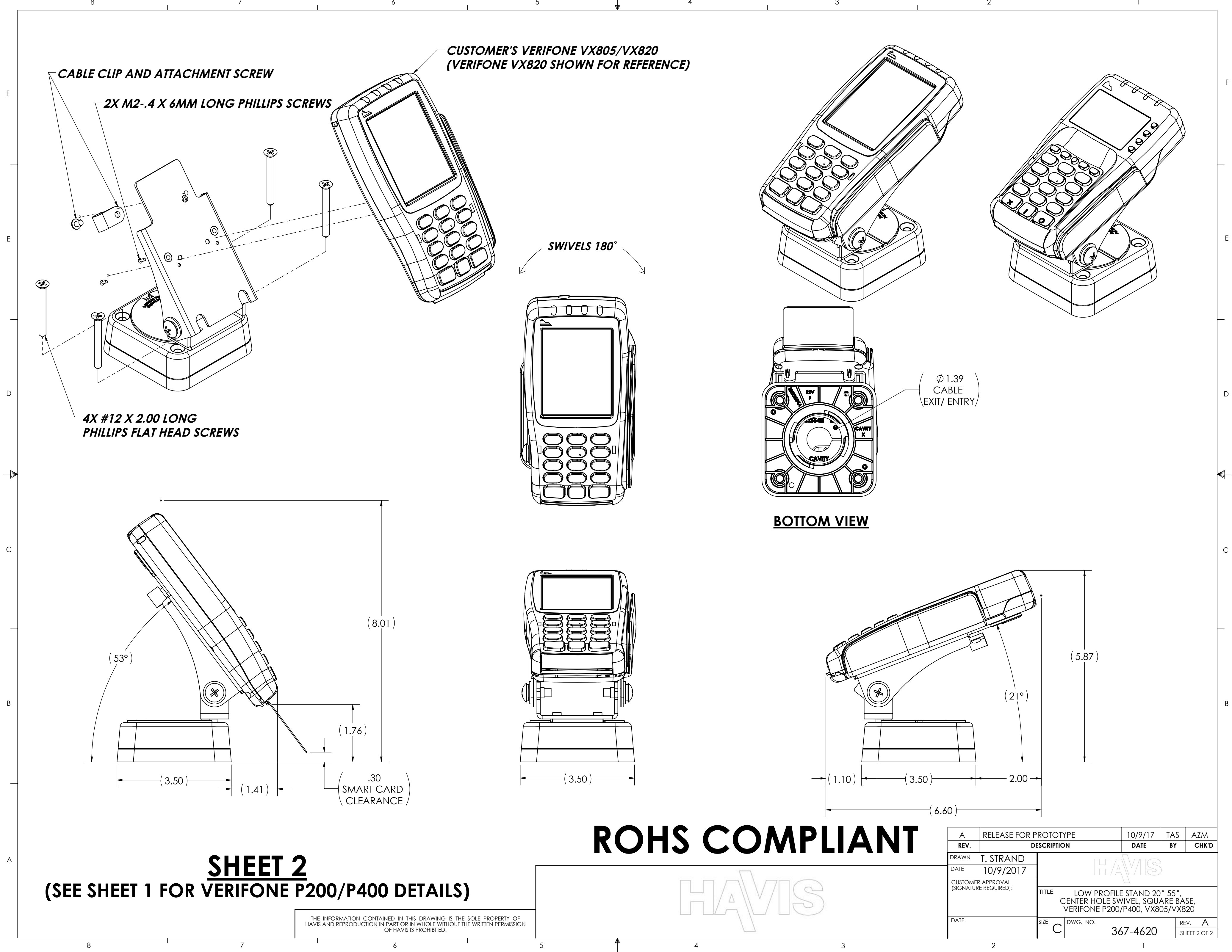
SHEET 1

(SEE SHEET 2 FOR VERIFONE VX805/VX820 DETAILS)

THE INFORMATION CONTAINED IN THIS DRAWING IS THE SOLE PROPERTY OF
HAVIS AND REPRODUCTION IN PART OR IN WHOLE WITHOUT THE WRITTEN PERMISSION
OF HAVIS IS PROHIBITED.

HAVIS

A	RELEASE FOR PROTOTYPE	10/9/17	TAS	AZM
REV.	DESCRIPTION	DATE	BY	CHK'D
DRAWN	T. STRAND	<div>HAVIS</div>		
DATE	10/9/2017			
CUSTOMER APPROVAL (SIGNATURE REQUIRED):	TITLE LOW PROFILE STAND 20°-55°, CENTER HOLE SWIVEL, SQUARE BASE, VERIFONE P200/P400, VX805/VX820			
DATE	SIZE C	DWG. NO. 367-4620	REV. A	CHK'D
		SHEET 1 OF 2		



SHEET 2
(SEE SHEET 1 FOR VERIFONE P200/P400 DETAILS)

THE INFORMATION CONTAINED IN THIS DRAWING IS THE SOLE PROPERTY OF HAVIS AND REPRODUCTION IN PART OR IN WHOLE WITHOUT THE WRITTEN PERMISSION OF HAVIS IS PROHIBITED.

ROHS COMPLIANT

HAVIS

A	RELEASE FOR PROTOTYPE	10/9/17	TAS	AZM
REV.	DESCRIPTION	DATE	BY	CHK'D
DRAWN	T. STRAND	HAVIS		
DATE	10/9/2017			
CUSTOMER APPROVAL (SIGNATURE REQUIRED):	TITLE LOW PROFILE STAND 20°-55°, CENTER HOLE SWIVEL, SQUARE BASE, VERIFONE P200/P400, VX805/VX820			
DATE	SIZE C	DWG. NO. 367-4620	REV. A	SHEET 2 OF 2