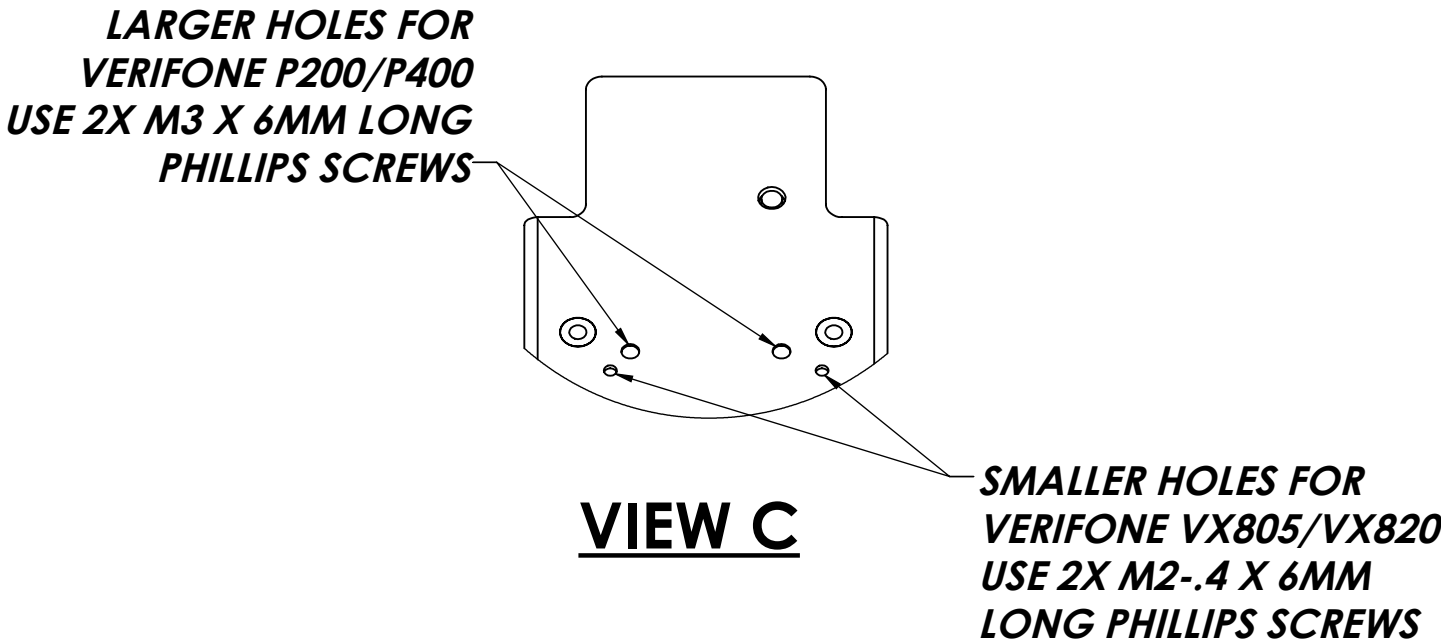
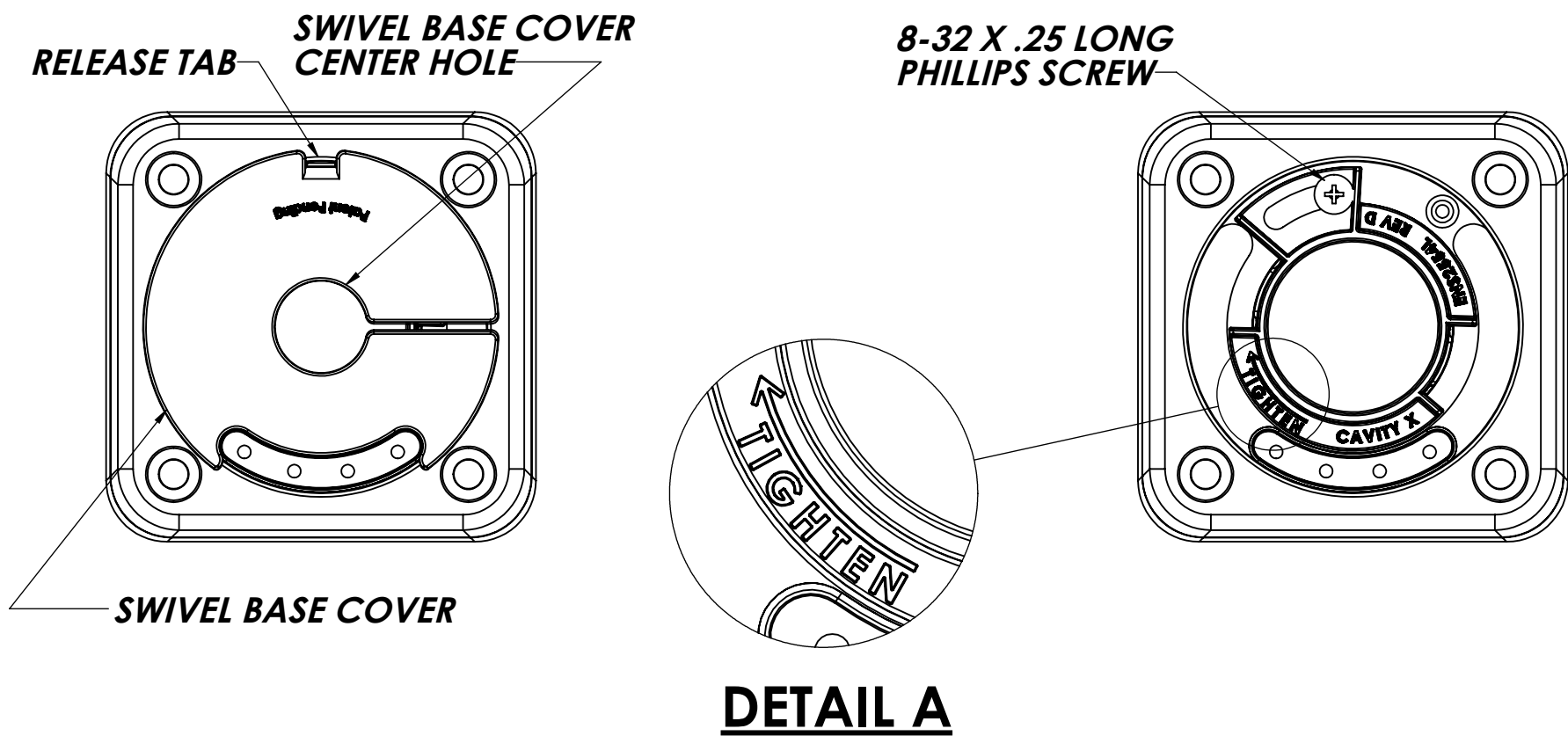
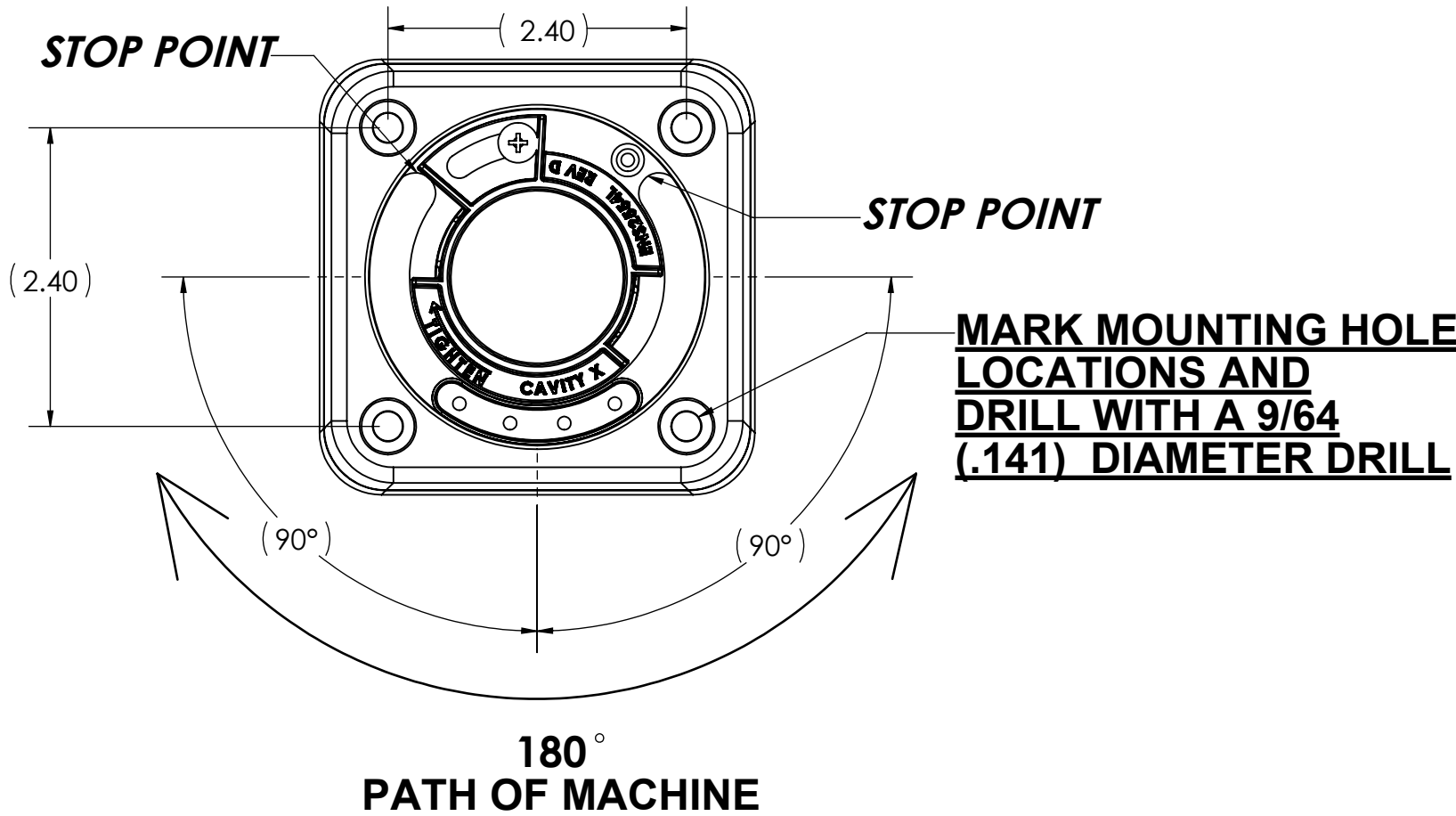


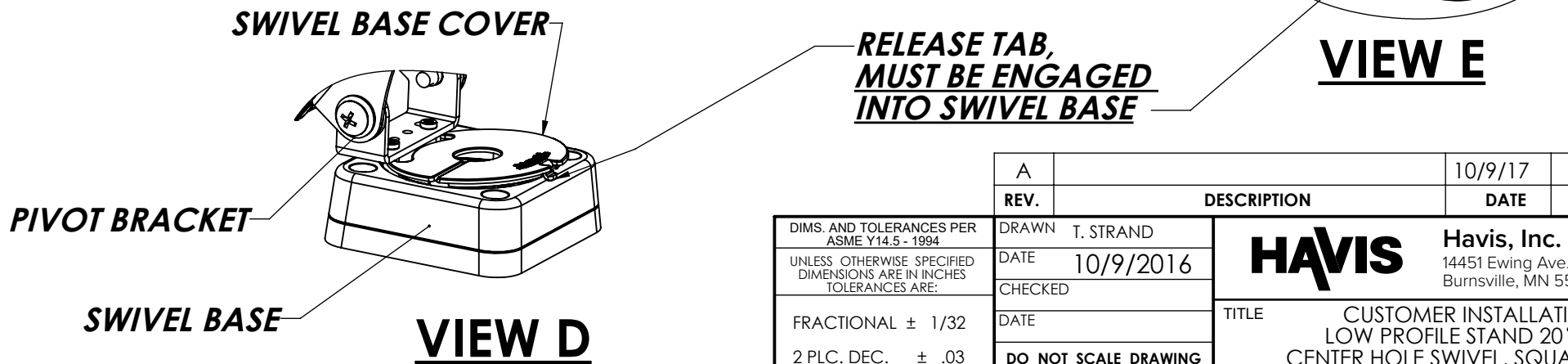
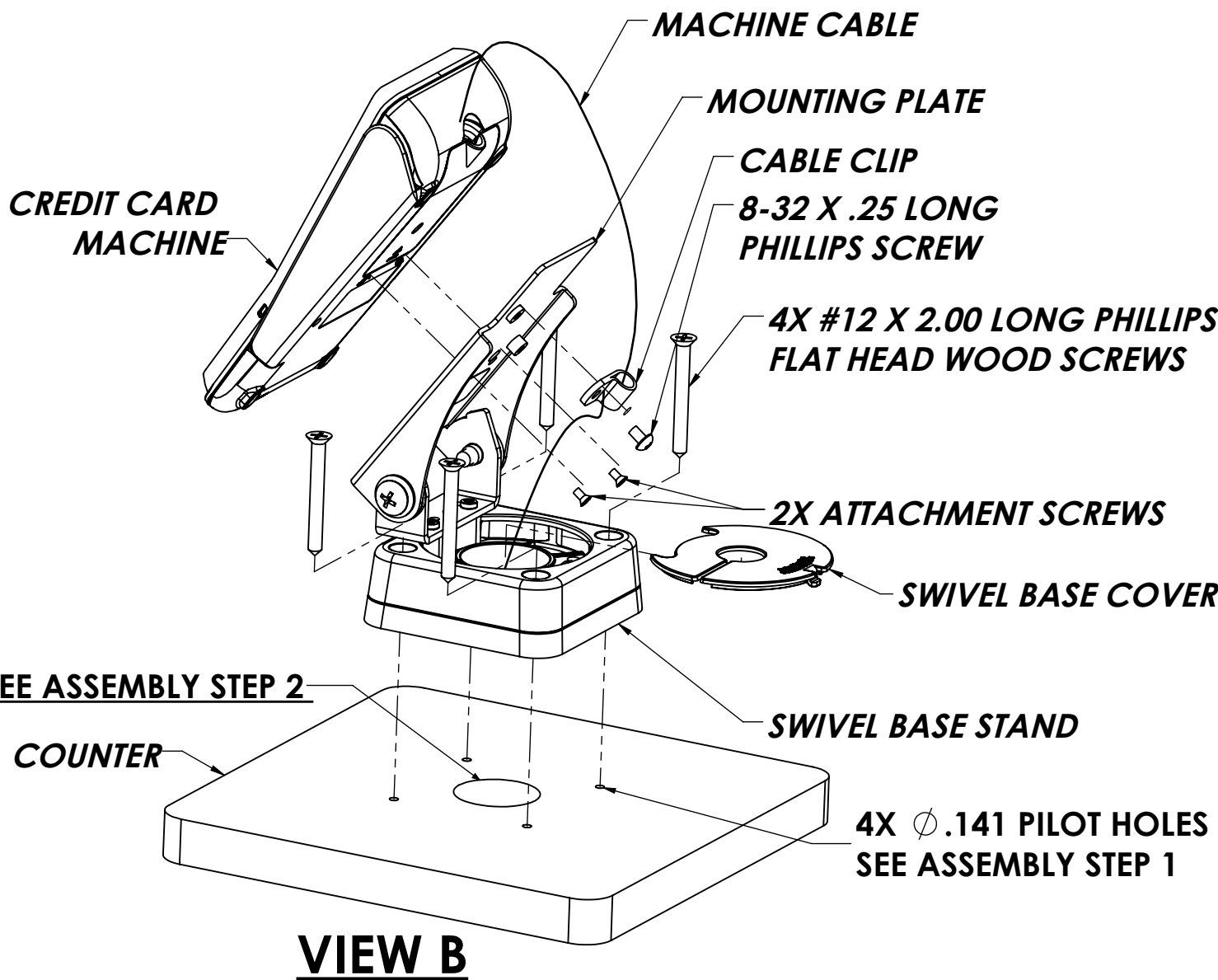
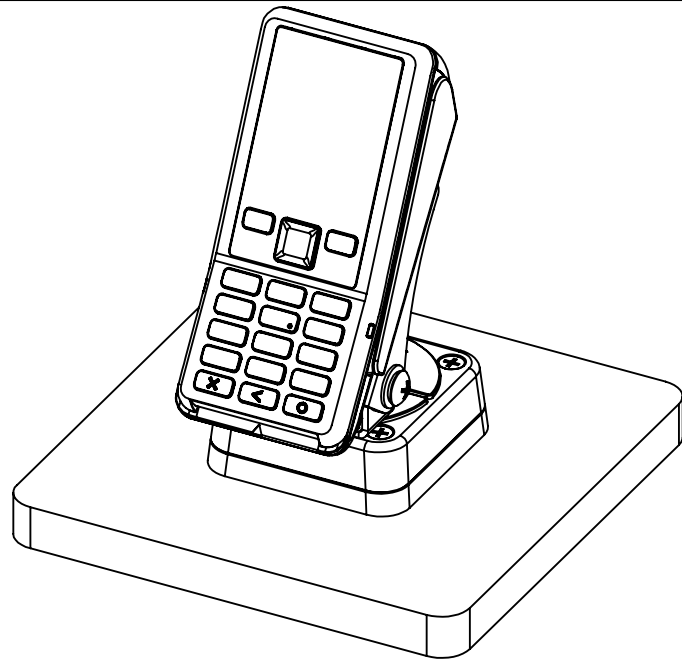
MOUNTING TEMPLATE


INSTALLATION INSTRUCTIONS

SWIVEL TENSION ADJUSTMENT



- TOOL LIST:**
- #1, #2 & #3 PHILLIPS SCREW OR DRILL DRIVER.
 - DRILL DRIVER & #28 DRILL BIT (ϕ .141")
 - OPTIONAL 1 3/8" (1.375") SPADE BIT
- ASSEMBLY STEPS:**
- ROTATE THE **SWIVEL BASE** LEFT OR RIGHT TO THE STOP POINT AND THEN COMPARE IT TO THE ILLUSTRATIONS ABOVE TO DETERMINE WHICH WAY YOU WANT THE **SWIVEL BASE** TO ROTATE.
 - (OPTIONAL) DRILL A 1 3/8" (1.375") THROUGH HOLE INTO YOUR **COUNTER** AS SHOWN IN **VIEW B**.
 - DRILL **4X PILOT HOLES** AND ASSEMBLE THE **SWIVEL BASE** TO THE **CUSTOMER'S COUNTER** USING **4X #12 X 2.00 LONG PHILLIPS FLAT HEAD WOOD SCREWS** AS SHOWN IN **VIEW B**.
 - INSTALL THE **CREDIT CARD MACHINE** TO THE **MOUNTING PLATE** AS SHOWN IN **VIEW B**. MAKE SURE TO USE THE CORRECT HOLES AND SCREWS AS INDICATED IN **VIEW C**.
 - (OPTIONAL) TO ADD/REDUCE SWIVEL TENSION REFER TO SWIVEL TENSION ADJUSTMENT ILLUSTRATIONS ABOVE. LOOSEN **8-32 X .25 LONG PHILLIPS SCREW**. ROTATE **INTERNAL CLAMP** CLOCKWISE TO TIGHTEN OR COUNTERCLOCKWISE TO LOOSEN THEN TIGHTEN **8-32 X .25 LONG PHILLIPS SCREW**, **MAKING SURE NOT TO OVER TIGHTEN**.
 - ROUTE THE **MACHINE CABLES** AND ATTACH THE **CABLE CLIP** USING THE **8-32 X .25 LONG PHILLIPS SCREW** AS SHOWN IN **VIEW B**.
 - INSTALL THE **SWIVEL BASE COVER** ON TO THE **SWIVEL BASE STAND** BY SLIDING IT IN BETWEEN THE **PIVOT BRACKET** AND THE **SWIVEL BASE** AS SHOWN IN **VIEW D**.
 - FLEX THE **SWIVEL BASE COVER** IN ORDER TO GET THE **RELEASE TAB** TO ENGAGE INTO THE **SWIVEL BASE** AS SHOWN IN **VIEW E**.



		A			10/9/17	TAS	AZM		
		REV.	DESCRIPTION			DATE	BY	CHK'D	
DIMS. AND TOLERANCES PER ASME Y14.5 - 1994 UNLESS OTHERWISE SPECIFIED DIMENSIONS ARE IN INCHES TOLERANCES ARE: FRACTIONAL ± 1/32 2 PLC. DEC. ± .03 3 PLC. DEC. ± .010 ANGULAR ± 0°30'		DRAWN		T. STRAND	<div></div> <div>Havis, Inc. 14451 Ewing Ave. Burnsville, MN 55306</div>				
		DATE		10/9/2016					
		CHECKED		TITLE CUSTOMER INSTALLATION, LOW PROFILE STAND 20°-55°, CENTER HOLE SWIVEL, SQUARE BASE, VERIFONE P200/P400, VX805/VX820					
		DATE							
		DO NOT SCALE DRAWING							
		MATERIAL							
		FINISH							
				SIZE		DWG. NO.		REV.	A
				C		367-4620		SHEET 1 OF 1	